

**New!**

# Rustic Series Homes!

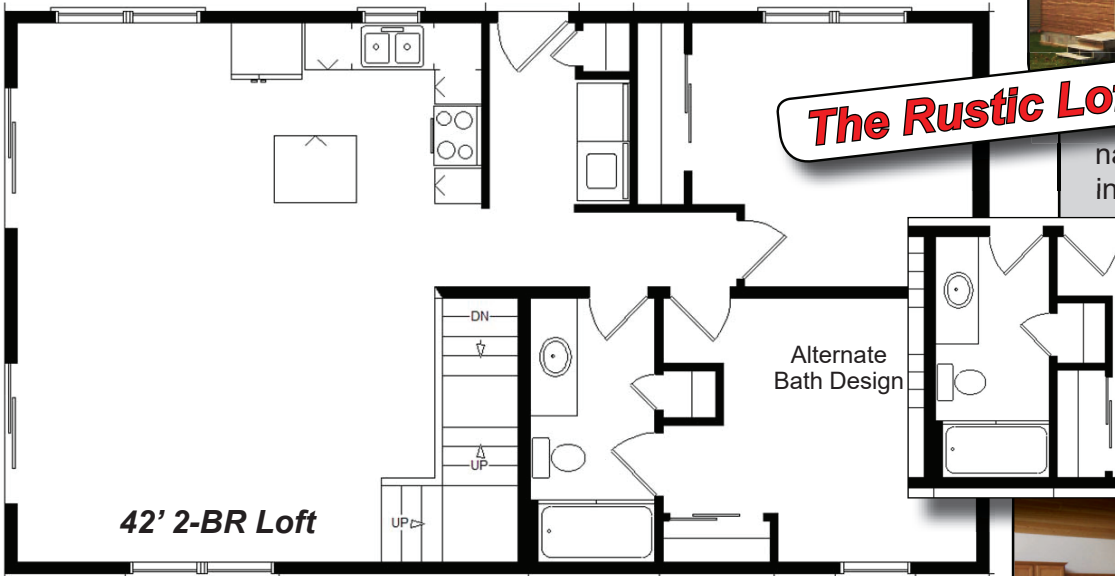
- ✓ Similar Specs As Our Standard Line Of Homes!
- ✓ Perfect For Lake Or Wooded Lots!
- ✓ Available In 3 Different Home Types!

**The Most Cost-Effective, Energy-Efficient & Best-Built Home Available!**



Our new "Design-Rustic" series homes are built to state codes and are designed for traditional basements or crawlspaces.

They are ideal for narrow, river or lakefront lots, or retirement homes...and include our extreme insulation package (R-49+ ceilings, 2x6 walls). Some can be set up and finished ready for "hookups" in one day! We invite you to compare our new Rustic line of homes with any other builder. We believe you will not find a home that is built better, includes more, or a better value.



**The Rustic Loft...**

*The Design Homes Rustic series was created to offer a quality-built, vacation-style home FOR LESS. They are built as well as our Standard series of homes, but in efficient plans that allow us to pass considerable savings on to you.*



**Construction Exceeds State 1 & 2-family Building Codes!**

**Price Includes:**  
 2x6 Walls & R-49 Ceilings, Oak Cabinets & Trim, Lifetime Siding & Shingles, 200-amp Electric Panel  
 Applicable State Tax

**Design Homes, Inc.**  
 Prairie du Chien, WI 53821

Design Homes has been producing the very best homes money can buy in the midwest for over 50 years. We are the only builder that sells factory-Direct with no dealers.

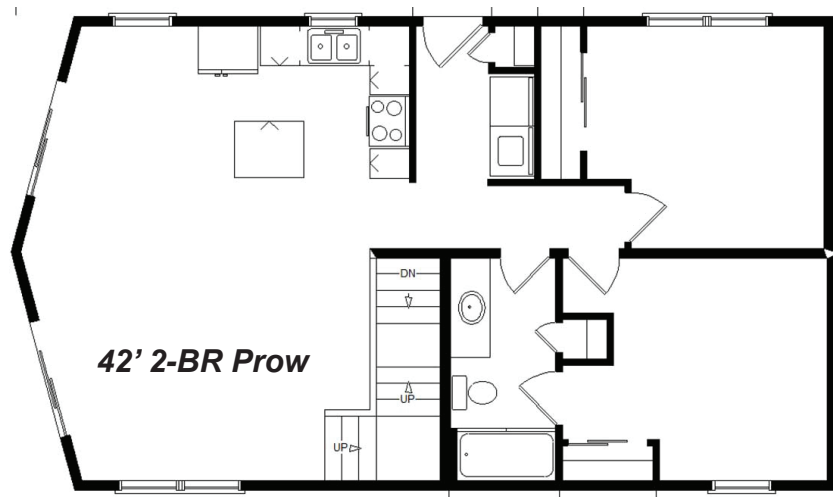


MN #BC146710

**www.DesignHomes.com ~ 800-627-9443**

## The Rustic Prow...

The **Rustic Prow** home uses a special parallel truss system to achieve a high vaulted ceiling with an R-49 insulation value! ...exceeds most "stick-built" home specs

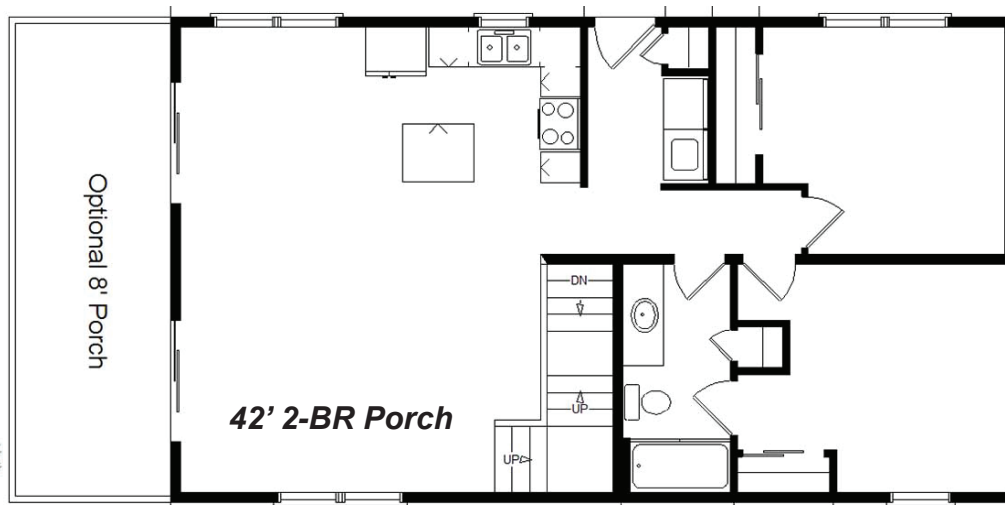


### Featuring All Brand-Name Components:

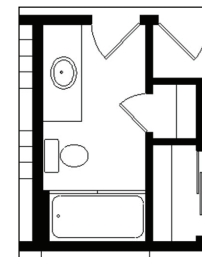
**Certainteed** (lifetime) Siding & Shingles  
**Taylor** (lifetime) Doors  
**Pella & WeatherShield** (20-year) Windows  
**AristoKraft** Cabinets  
**Whirlpool** Appliances  
**Kohler** Plumbing  
**Square-D** Electrical  
**Shaw, Revwood Laminate** Flooring

## The Rustic Porch...

The **Rustic Porch** home features an integral porch option which is an extension of the house---much stronger than other "attached" porches!



### Alternate Bath Design



(Specifications Subject To Change Without Notice)

**...About Options...** Many of the options available in our "Standard" line of homes are also available in the Design-Rustic series. Need more space? You can add to the length in 2' increments---or simply bump-out a room. Upgrade your cabinets to hickory, cherry, birch or maple. Add a patio door or a bow window. Choose an optional PTAC hybrid heating/cooling system. **...About Our Construction...** Every Design Home is built indoors with construction details that usually exceed the "stick-built" norm. 2x6 Walls, Double rim joists, 350 topnotch flooring, Oak trim & doors & cabinets, R-49 ceilings!

**Design Homes, Inc.**  
 Prairie du Chien, WI 53821

**800-627-9443**  
[www.DesignHomes.com](http://www.DesignHomes.com)

**Open Mon. - Sat. & Sundays in PdC!**