

# Model #2

28x76 4-Sec Ranch 2,128 sq. ft.

# Design Homes, Inc.

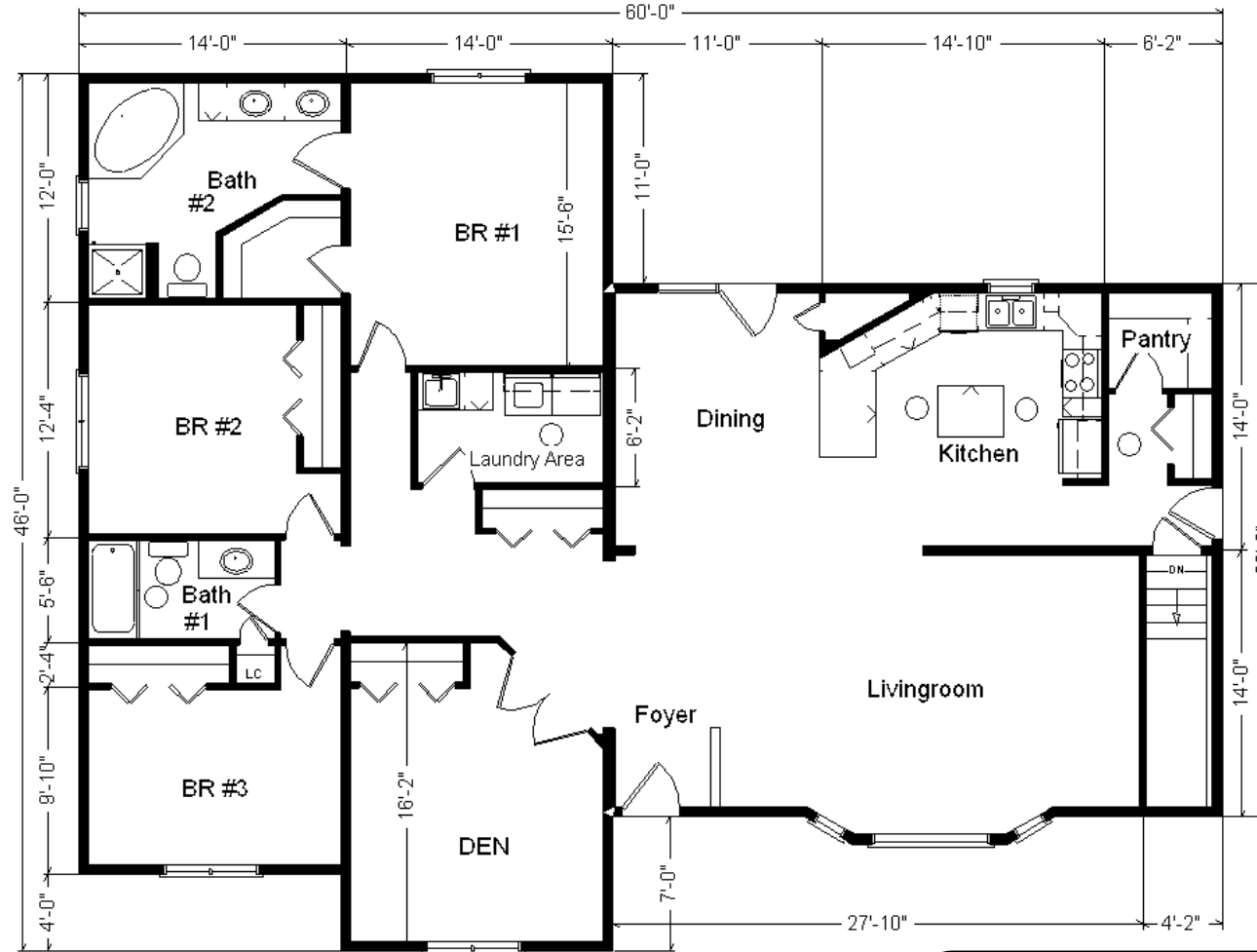
Ames, IA  
(#10051 -2-4)



<b>Base Price:</b>	<b>\$153,869.00</b>
<b>This Home Displays The Following Options:</b>	
6/12 Roof Slope	3,648.00
Large Gable	1,400.00
Lineals Around Windows & Doors	777.00
Pella Proline Casement Windows	3,840.00
Upgrade Carpet (Winsford)	1,739.00
DHI Paddle Fan/Light (Din)	163.00
Wire for Elec. Range	100.00
Vaulted Ceilings (LR, DR, Kit)	1,565.00
Interior French Doors w/Glass	1,185.00
Laundry Area w/ Cabinets	750.00
Laundry Sink/Faucet	695.00
18" of Extra Utility Room Cabinets	192.00
Brushed Nickel Bathroom Package	1,165.00
Pull-out Kitchen Faucet (K15160BN)	195.00
Extra 3/4 Bath	2,450.00
Double Sink Vanity	750.00
18" Linen Closet w/Shelves	416.00
Corner Whirlpool Tub	3,200.00
Shower Door	285.00
Vanity Base Drawers (x3)	334.00
Spring Valley Oak Med.Cabinets (disc.)	1,305.00
Deluxe Drawers (Kitchen)	550.00
Custom Cabinets	196.00
Mullion Glass Cabinet Door	128.00
Crown Molding Above Kit Cabs. (27')	432.00
36" Snack Bar	40.00
Walk-Out Bay	4,782.00
Suntubes (x5)	2,800.00
6' Pella French Door	3,340.00

**Total With Options Shown: \$192,291.00**

Zone 1



**Color Information**  
Sav. Wicker Siding,  
Clay Trim,  
Weatherwood  
Shingles,  
No Shutters, Clay  
Lineals, White Baths,  
Rye Carpet, 91125  
Vinyls, Nutmeg Oak  
Trim & Doors, Pella  
Tan Casement  
Windows w/Nutmeg  
Interiors, Black  
Rangehood, Mocha  
Travertine  
Countertop, SS  
Kitchen Sink, PEX  
Water Supplies

**Buy Display Model  
For:  
\$173,062.00!  
(discounted 19,229.00!)**

MN #BC146710

**Price Includes: 100 Mile Delivery,  
Crane Work, All Blueprints, R55  
Ceilings, R20 Exterior Walls, REAL  
Plywood Floors, Kohler Plumbing,  
Pella Windows, 200 Amp Service,  
All Applicable Tax and Much  
More!!**