

Model #3

28x44 Ranch 1,232 sq. ft.

Design Homes, Inc.

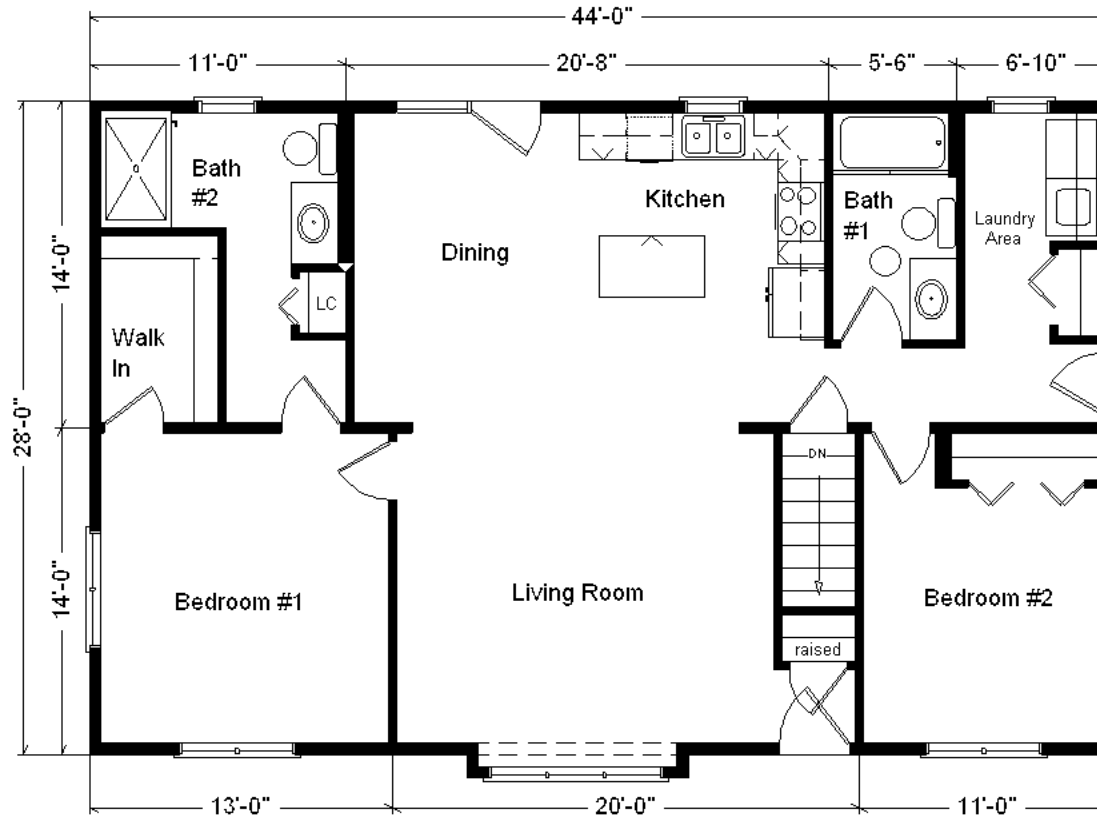
Ames, IA
 (#10397 -5-6)



Base Price:	\$100,053.00
This Home Displays The Following Options:	
6/12 Roof Slope	2,156.00
Large Gable	1,995.00
Extra Roof Detail	217.00
Window Lineals	708.00
Pella ProLine Casement Windows	5,285.00
Java Bean Oak Trim and Doors	500.00
Carpet Upgrade (Adaptation)	726.00
1' Bump-out LR Window	859.00
Vaulted Ceilings (Kit,DR,LR)	1,224.00
Benton Birch Umber Cabinets	2,775.00
Select Option w/FX Drawers (Kitchen)	567.00
Custom Cabinets in Kitchen	57.00
Pull-down Kit. Faucet (K560-BZ)	235.00
DHI Paddle Fan/Light (x2)	367.00
2 Hanging Lights over Kit. Island	35.00
Wire for Electric Range	100.00
Extra 3/4 Bath	2,450.00
5' Shower Upgrade	178.00
Shower Door	285.00
Elongated Toilet Bowl	62.00
Vanity Base Drawers (x2)	140.00
Laundry Area Hookups	428.00
Rubbed Bronze Baths	795.00
Suntube (Bath #1)	560.00
6' Pella Fr. Swing Patio Door	3,440.00

Total With Options Shown: \$126,197.00

Window /Door blinds shown are optional and not included in Total price.



ZONES 1 & 2 July. 2018

Price Includes: Delivery in Zones 1 and 2, Crane Work, All Blueprints, R55 Ceilings, R20 Exterior Walls, Kohler Plumbing, Pella Windows, 200 Amp Service, All Applicable Tax and Much More!!

Furnace and Duct Work Included and Installed in Zone 1 ONLY

Color Information

Sav. Wicker Siding, Almond Trim, Weatherwood Shingles, Tan Lineals, Bisque Baths, #259 Parchmont Vanities, Treasure Carpet, 91184 Vinyls, SS Sink, Java Bean Oak Trim & Doors, SS vented Rangehood, Tan Pella Casement Windows w/Dark Mahogany Interior Stain, #MT300 Natural Limestone Countertop



MN #BC146710

Reverse Plan w/Optional Garage Shown

