

Design Homes, Inc.



MN #BC146710

Ames, IA
 (#10324 -4-4)

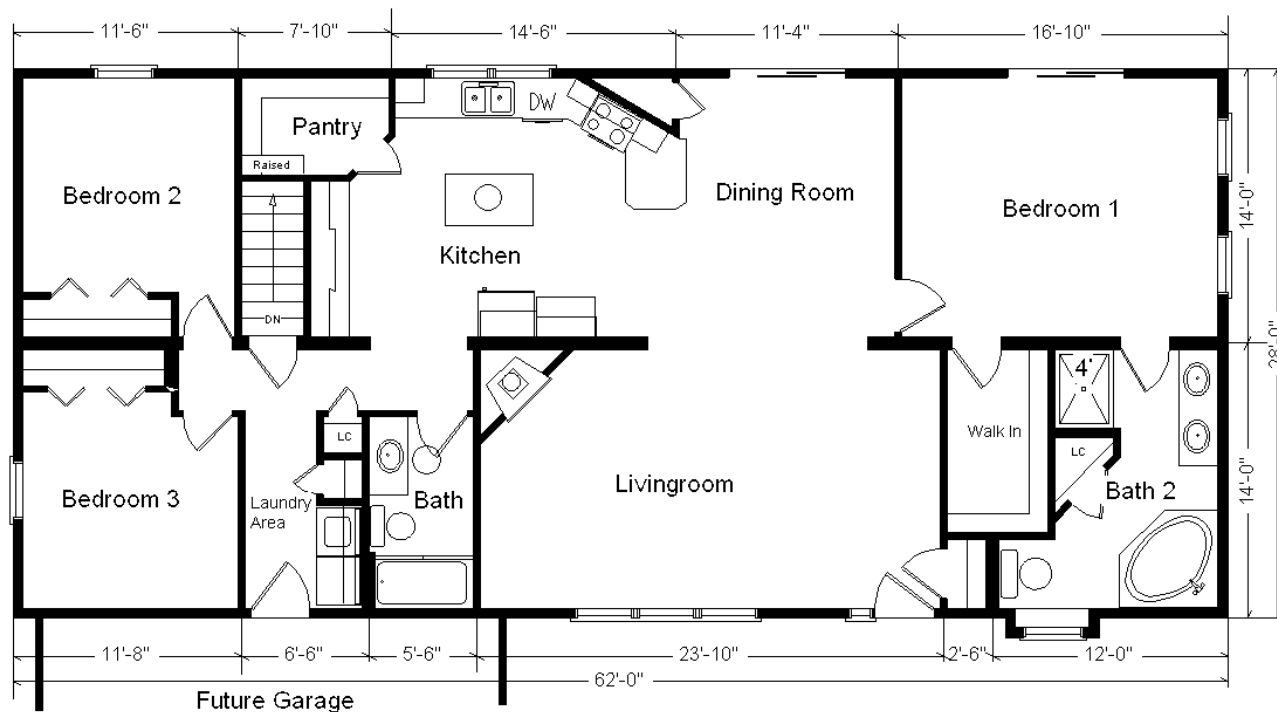
Model #4
28x62 Ranch
1,736 sq. ft.

ZONES 1 & 2

Color Information....

LP Smokey Ash Siding, White Trim, Black Shingles, White Lineals, Bisque Baths, Jute Carpet, Natural Oak Trim & Doors, SS Sink, 91088 Vinyls, White Pella Dbl-hung Pro-line Windows w/Nat. Oak Interiors and White Grilles, Vented Microwave, Golden Macareello Countertop, #32 Tex. Black FP Front

Base Price:	\$118,942.00
This Home Displays The Following Options:	
6/12 Roof Slope	2,976.00
Large Gable	1,400.00
Extra Gable Detail	209.00
1' Bump-Out Small Window	500.00
LP Smartside Siding	5,673.00
Window and Door Lineals	776.00
9' Ceilings	3,212.00
Vaulted Ceilings (LR, DR, Kitchen)	1,550.00
Laminate Tile (Kit/Din, Foyer)	2,646.00
Upgrade Carpet (Adaption)	1,093.00
Gas Fireplace	5,600.00
Upgrade 6 Panel Oak Doors (x10)	2,140.00
Pendant Light Fixture (LR)	35.00
Laundry Area w/Maple Cabinets	1,120.00
Oil Rubbed Bronze Bath Package	1,165.00
Extra 3/4 Bath	2,450.00
Comer Whirlpool	3,200.00
Double Sink Vanity	725.00
Vanity Base Drawers (x3)	285.00
Shower Door (Bath #2)	285.00
Upgrade Vanity Tops (Cultured Granite)	561.00
Seneca Ridge Maple Arch Cabinets (disc.)	3,500.00
8.5' Extra Base Cabinets	1,632.00
4' Extra Wall Cabinets	576.00
Custom Cabinets	211.00
Hi-Definition Kit. Countertop	467.00
Kohler Pull-out Faucet (KP15160CP)	146.00
Crown Molding Above Kit Cabinets (32')	512.00
5' Mullion Glass Door Wall Cabinets	425.00
Select Kit. Drawers	550.00
Whirlpool SS Dishwasher (WDF310)	624.00
Whirlpool SS Microwave (WMH31017)	404.00
Suntube (x2)	1,120.00
Pella Proline Dbl-hung Windows	3,954.00
2- 6' Pella Proline Patio Doors	5,410.00
Window Grilles GIA (x10)	630.00
Upgrade Front Entry Door (S684)	325.00
Sidelight (S692)	772.00
Total With Options Shown:	\$177,801.00



Price Includes: Delivery in Zones 1 and 2, Crane Work, All Blueprints, R55 Ceilings, R20 Exterior Walls, REAL Plywood Floors, Kohler Plumbing, Pella Windows, 200 Amp Service, All Applicable Tax and Much More!!

Furnace and Duct Work Included and Installed in Zone 1 ONLY