

# Model #3

28x48 Prow Ranch 1,288 sq. ft.

# Design Homes, Inc.

Burlington, IA

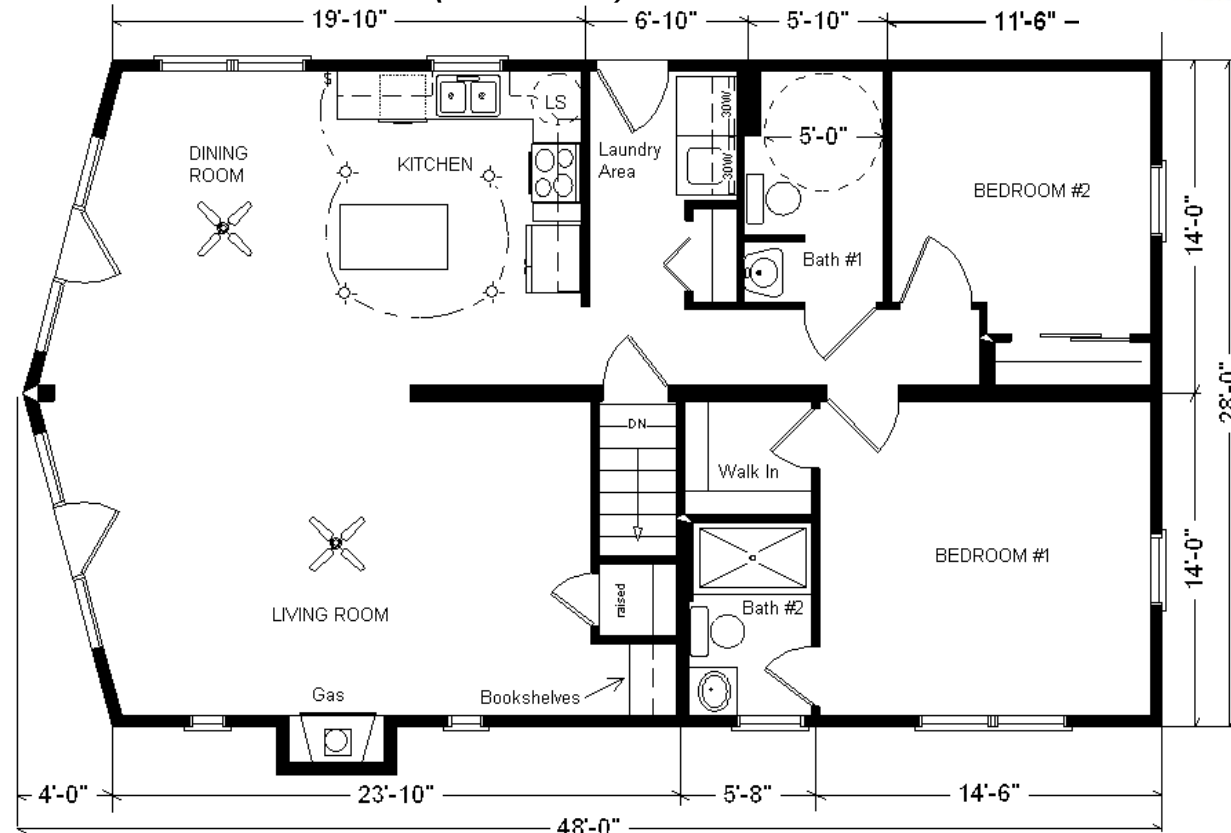
(#10503 -6-6)



<b>Base Price:</b>	<b>\$99,648.00</b>
<b>This Home Displays The Following Options:</b>	
Steel Roof	3,552.00
Outside Chimney Chase	1,350.00
Gas Fireplace	5,600.00
Vaulted Great Room w/Par. Trusses (R50)	1,811.00
LP Siding w/Diamond Coat Finish	4,114.00
Window and Door Lineals	430.00
Upgrade Carpet (E. Nice)	1,138.00
Pioneer Hickory Bookshelves (LR)	865.00
Wire for Electric Range	100.00
Ceiling Fan w/Lights (x2)	367.00
4 LED Can Lights on Dimmer (Kit)	285.00
Extra 1/2 Bath	1,800.00
Rubbed Bronze Bath Package	645.00
5' Shower Upgrade (Bath #2)	178.00
Shower Doors (Bath #2)	285.00
Dual Flush Toilet (Bath #2)	97.00
Vanity Drawer Base (Bath #2)	132.00
Cult. Granite Vanity Top (Bath #2)	118.00
Handicap Toilet (Bath #1)	215.00
Grab Bars (x2 Bath #1)	194.00
Laundry Area w/Hickory Cabinets	940.00
Pioneer Hickory Natural Cabinets	2,775.00
Crown Molding (19')	304.00
Hi Definition Kit. Countertops	255.00
Swan Quartz Sink (Nero)	332.00
Kohler Pull-down Kit. Faucet	235.00
Pella ProLine Windows	3,298.00
9' Trapezoid Windows (x2)	4,558.00
9 Hinged Patio Doors (x2 ProLine)	9,780.00
Exterior Door Credit	-355.00

**Total With Options Shown: \$145,046.00**

ZONE 1



MN #BC146710

**Price Includes: 100 Mile Delivery, Crane Work, All Blueprints, R55 Ceilings, R20 Exterior Walls, REAL Plywood Floors, Kohler Plumbing, Pella Windows, 200 Amp Service, All Applicable Tax and Much More!!**



*Drapes & appliances shown are optional and not included in Total price.*

Aug 2017

### Color Information

*LP Seal Siding, Almond Trim, Oyster Lineals, Light Stone Metal Roof., Sand Carpet, Bisque Baths, #430 & #259 Vanity Tops, Black Appliances, Antique Mascarello Countertop, Sand Carpets. 91160 Vinyl Flooring, Pella ProLine Windows w/Golden Oak Interiors, Caledonia FP Facade, Pioneer Hickory Natural Cabinets, Rubbed Bronze Package*

### Buy Display Model

For:

**\$133,442!**

(discounted 11,604.00!)

NOTE...Heating Systems are optional on all Display Homes in Zone 1