

# Model #5

24x42 Finished Loft

1,320 sq. ft.

From Design Homes New Rustic Line!

# Design Homes, Inc.

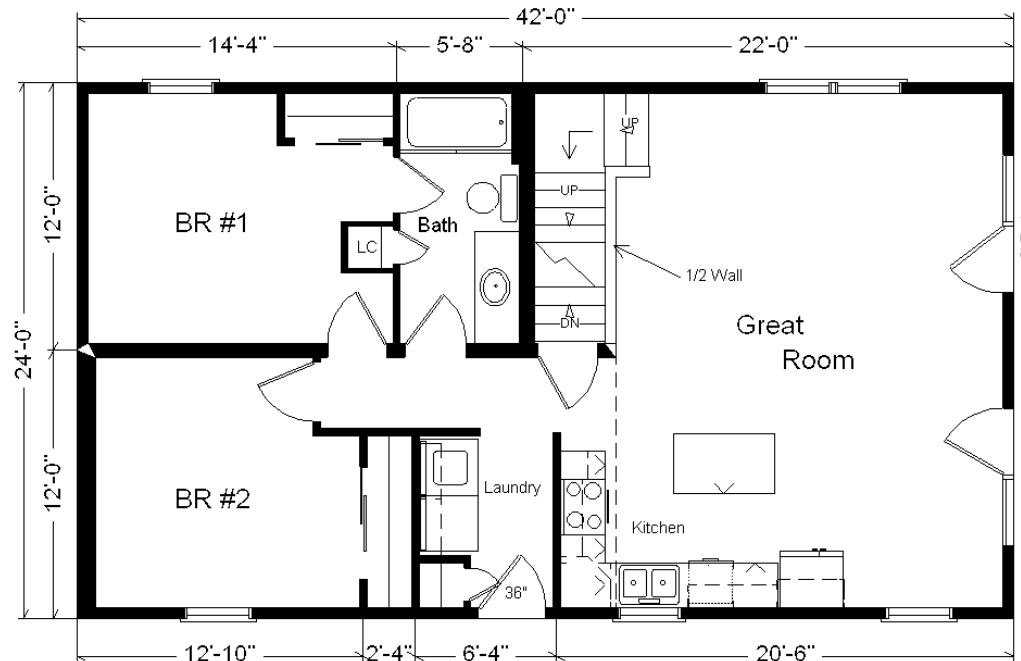
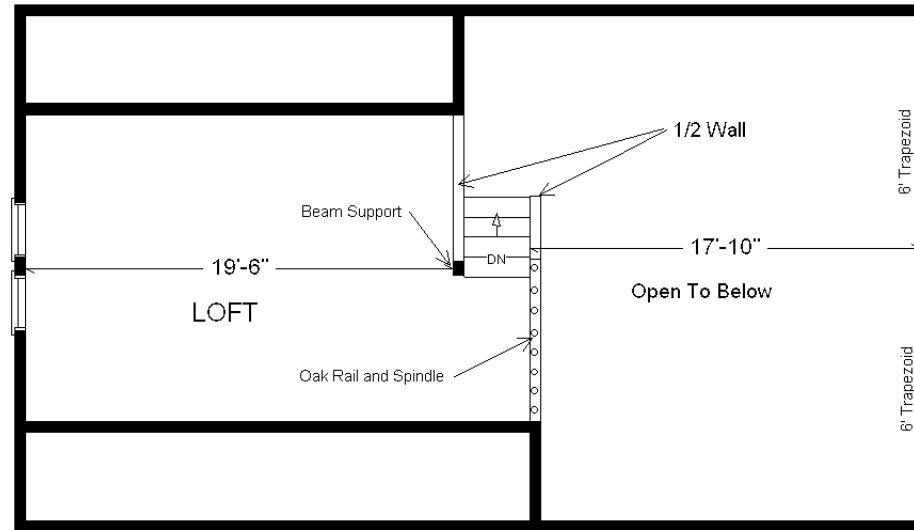
Burlington, IA

(#10475-6-6)



<b>Base Price:</b>	<b>\$116,550.00</b>
<b>This Home Displays The Following Options:</b>	
LP Smartside Siding (1502 sf)	5,930.00
3.5" Window Lineals	492.00
Carpet Upgrade (Everything Nice)	1,294.00
Laundry Area w\Shelf	428.00
ORB Bath Fixtures	495.00
Vanity Drawer Base (VDDB)	226.00
Hi-definition Kit. Countertops	263.00
Pioneer Hickory Cabinets	2,775.00
APC Cabinet Option	1,450.00
Pull-down Kohler Kit. Faucet (ORB)	235.00
Crown Molding (19')	304.00
Custom Cabinets	235.00
Mullion Glass Cab. Door	128.00
WP Microwave (WMH310)	404.00
Prefinished Oak Railing	490.00
6' Trapezoid Windows (x2)	5,014.00
Pella ProLine Windows	2,767.00
2 - 6' Proline Fr. Swing Doors	6,680.00
2nd Exterior Door Credit	-355.00

**Total With Options Shown: \$145,805.00**



### Color Information

Chestnut LP Siding, Clay Trim, Oyster Shell Lineals, Weatherwood Shingles, Bisque Bath, Bamboo Carpet, 91181 Vinyls, SS Sink, Pecan Oak Trim & Doors, Natural Hickory Cabinets, Black Unvented Rangehood, Putty Pella Dbl-hung and Casement Windows, Pecan Car Siding on Ceiling and Walls, Antique Mascarello Countertop, ORB Hardware/ Bath

MN #BC146710

Jan 2017

**Price Includes: Delivery in Zone 1, Crane Work, All Blueprints, R55 Ceilings, R20 Exterior Walls, REAL Plywood Floors, Knotty Pine Ceiling and End Walls, Kohler Plumbing, Pella Windows, 200 Amp Service, All Applicable Tax and Much More!!**

**ZONE 1**

NOTE...Heating Systems are optional on all Design Home's Rustic and Basic Series in Zone 1

