

<b>Base Price:</b>	<b>\$118,942.00</b>
<b>This Home Displays The Following Options:</b>	
6/12 Roof Slope	2,976.00
Large Gable	1,400.00
Extra Gable Detail	209.00
1' Bump-Out Window (Bath #2)	500.00
Mastic Vinyl Siding (disc.)	4,620.00
3 1/2" Window\Door Lineals	695.00
Upgrade Carpet (Gorham)	827.00
Wood-look Laminate (Kit, Dining, Foyer)	1,545.00
Tile-look Laminate (Bath #2)	545.00
Vaulted Ceilings (LR, DR, Kit)	1,550.00
Gas Fireplace	5,600.00
Upgrade 6 Panel Oak Doors (x10)	2,140.00
Laundry Area w/Cabinets	750.00
Extra 3/4 Bath	2,450.00
Kohler Corner Whirlpool	3,200.00
Double Sink Vanity	725.00
Vanity Base Drawers (x3)	490.00
Cult. Granite Vanity (Bath #1)	236.00
Brushed Nickel Bath Package	1,165.00
Sutton Cliffs Hickory Cabinets	4,150.00
7.5' Extra Base Cabinets	1,583.00
6.5' Extra Wall Cabinets	1,040.00
5' Mullion Glass Door Wall Cabinets	425.00
Crown Molding (37')	592.00
Custom Cabinets	320.00
Whirlpool Dishwasher (DU850)	504.00
Microwave/hood (WMH1163)	354.00
Kohler Cast Iron Kit. Sink	307.00
Pull-out Kit. Faucet (K15160-BN)	195.00
Suntube (x4)	2,240.00
Padle Fan/Light (LR)	204.00
Visions Double-hung Vinyl Windows	678.00
Extra Casement Windows (BR #1)	818.00
6' Visions Fr. Patio Door	1,074.00
Painted Front Doors (1 Side)	272.00
Sidelight (S33)	573.00

**Total With Options Shown: \$165,894.00**

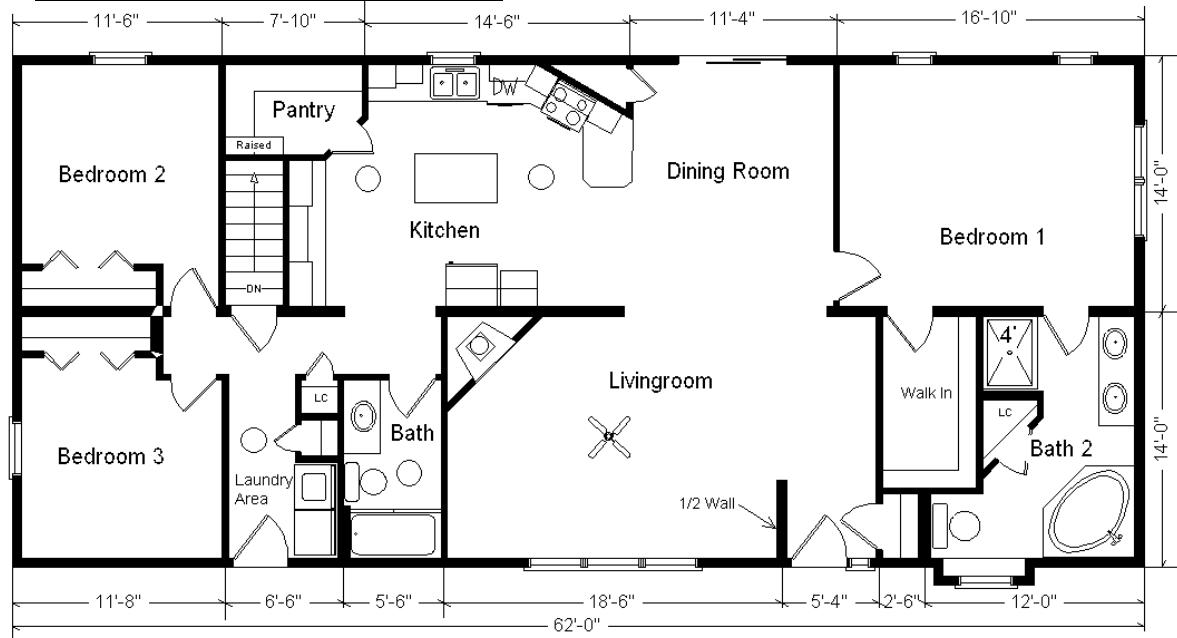
# Design Homes, Inc.

**Buy Display Model  
For:  
\$145,984.00!  
(discounted 19,910.00!)**

**Burlington, IA**

**(#9949 -2-4)**

MN #BC146710



**Model #6**  
**28x62 Ranch 1,736 sq. ft.**



NOTE...Heating Systems are optional on all Display Homes in Zone 1

**Color Information**  
Timberstone Siding, Almond Trim, Weatherwood Shingles, Desert Tan Linials, No Shutters, White Baths, #431 Vanity, Camel Carpet, Bisque Sink, 91082 Vinyls, Natural Oak Trim & Doors, Tan Visions Dbl-hung Windows, Black Dishwasher & Microwave, Butterum Granite Countertop, Black FP Front, 188 & 159 Laminates

Aug 2017

ZONE 1

Price Includes: 100 Mile Delivery, Crane Work, All Blueprints, R55 Ceilings, R20 Exterior Walls, REAL Plywood Floors, Kohler Plumbing, Pella Windows, 200 Amp Service, All Applicable Tax and Much More!!