

Model #3

28x62 Ranch 1736 sq. ft.

Design Homes, Inc.

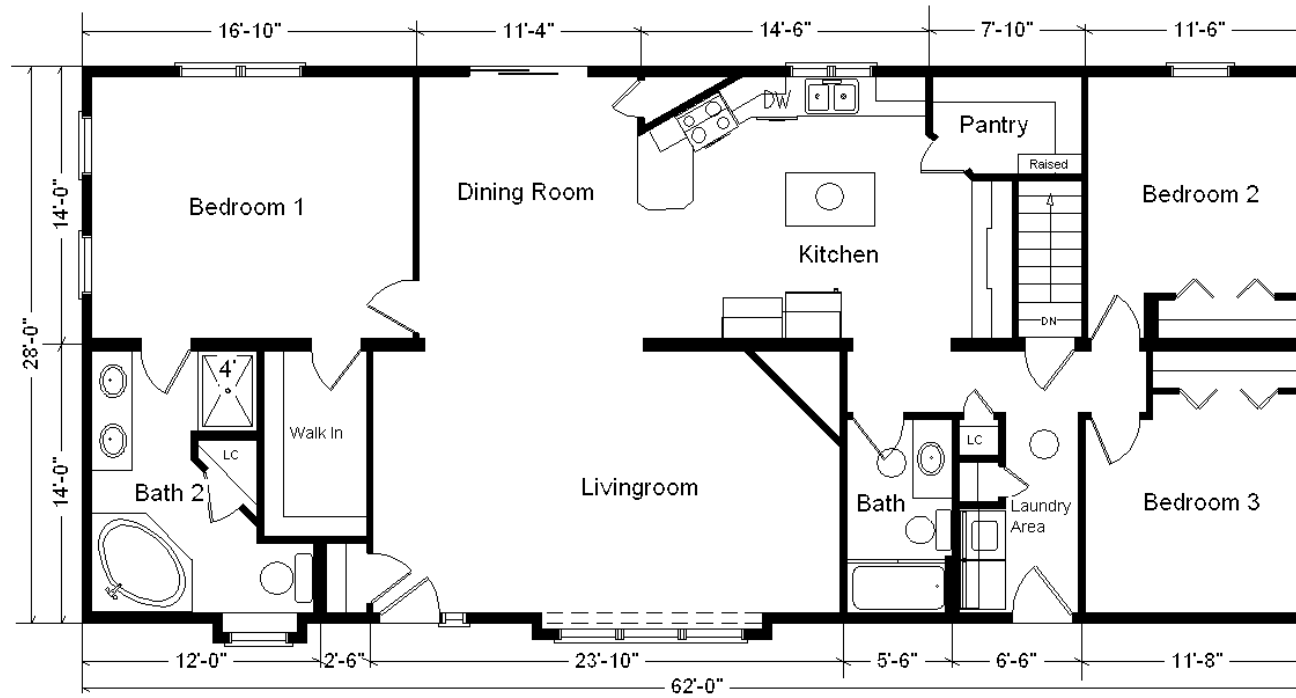
Clearwater, MN

(#10423 -5-4)



Base Price:	\$123,700.00
This Home Displays The Following Options:	
6/12 Roof Slope	3,038.00
Double Gable	1,819.00
1' Bump-out LR Window	859.00
1' Bump-out Bathroom Window	520.00
LP Smartside Siding	5,338.00
LP Shake Siding on Bump-out/Gable	1,376.00
Exterior Lineals on Doors & Windows	952.00
Upgrade Carpet (Adaptation)	1,216.00
Vaulted Ceilings (LR, DR, Kit)	1,595.00
6 Panel Oak Doors (x12)	2,580.00
Extra 3/4 Bath	2,450.00
Laundry Area w/Saybrooke Cabinets	985.00
Brushed Nickel Package	1,165.00
Shower Doors (Bath #2)	285.00
Kohler Corner Whirlpool	3,200.00
Double Sink Vanity	725.00
Vanity Base Drawers (x3)	490.00
Cultured Granite Vanities	590.00
Tri-view Medicine Cabinets (x3)	630.00
Saybrooke Birch Cabinets	2,858.00
Select Kit. Cabinet Option	567.00
8.5' Extra Base Cabinets	1,879.00
7' Extra Wall Cabinets	980.00
Crown Molding Above Kit Cabinets (37')	592.00
3' Mullion Glass Door Wall Cabinets	255.00
Custom Cabinets	477.00
Hi-Definition Kit. Countertops	458.00
Pull-out Kitchen Faucet (K560-CP)	215.00
Whirlpool Dishwasher (WDF520PADM)	724.00
Suntube (x3)	1,680.00
Pella Proline Windows	5,708.00
Window Grilles (x12)	780.00
6' Pella Proline Patio Door	2,786.00
Upgrade Front Door (S684HRRN)	325.00
Sidelight (S694HRRN)	850.00

Total With Options Shown: \$174,647.00



Color Information
 LP Smokey Ash Siding,
 LP Pelican Shake
 Accents, White Trim,
 Moire Black Shingles,
 White Lineals, Bisque
 Baths, #430 Vanity Tops,
 Jute Carpet, 91180
 Vinyls, SS Kit. Sink,
 Saddle Oak Trim &
 Doors, SS DW &
 Rangehood,
 White Dbl-hung Windows
 w/Saddle Interiors,
 Golden Mascarello
 Countertop, Saddle
 Stained Cabinets

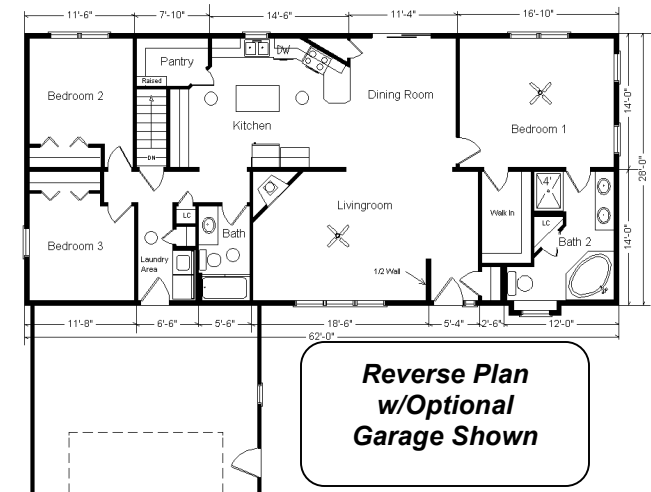
Price Includes: Delivery, Crane Work, All Blueprints, R55 Ceilings, R20 Exterior Walls, REAL Plywood Floors, Kohler Plumbing, Pella Windows, 200 Amp Service, All Applicable Tax and Much More!!



MN #BC146710

Feb 2018

Zone 2



Reverse Plan w/Optional Garage Shown