

# Model #7

24x42 Rustic Prow Ranch 960 sq. ft.

From Design Homes New Rustic Series!

# Design Homes, Inc.

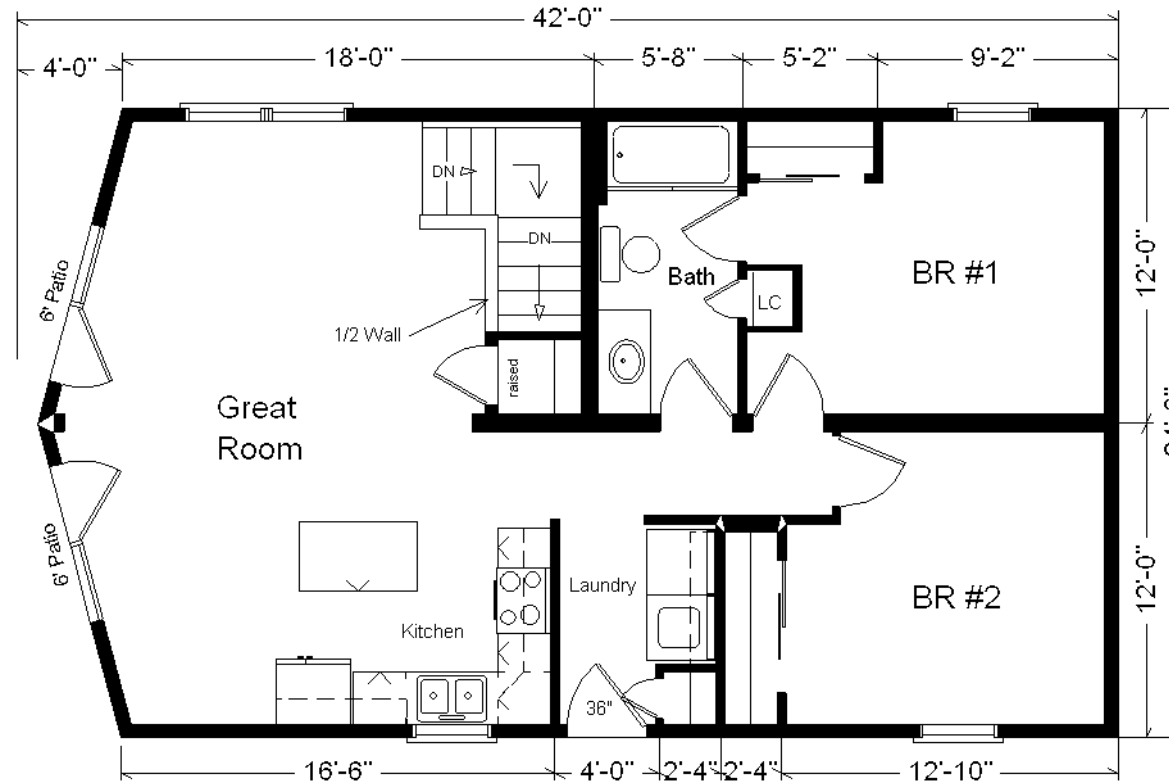
Clearwater, MN

(#10472 -6-6)



<b>Base Price:</b>	<b>\$73,854.00</b>
<b>This Home Displays The Following Options:</b>	
Steel Roofing	2,436.00
Par.Truss/R49/Vaulted Great Room	1,811.00
Harrison Rustic Birch Cabinets	3,500.00
Select Cabinet Option	550.00
Crown Molding (17')	272.00
Hi-def Kitchen Countertops	225.00
Kohler Pull-down Faucet (K560-CP)	215.00
Paddle Fan/Lights (x2)	367.00
Cult. Granite Vanity Top	236.00
Vanity Drawer Base (VDDB)	226.00
Tri'view Medicine Cabinet (Nutone)	130.00
Laundry Area w/HR Birch Cabinets	1,105.00
Pella Proline Windows	654.00
6' Proline Trapezoid Windows (x2)	2,738.00
6' Proline Patio Doors (x2)	6,680.00
Painted Exterior Door (1 side)	136.00
2nd Exterior Door Credit	-355.00

**Total With Options Shown: \$94,780.00**



**Color Information**  
 Natural Clay Siding, Green Trim, Evergreen Steel Roofing, Bisque Bath, #431 Vanity Top, Peat Carpet, Black Rangehood, 91181 Vinyl, Pella Green Dbl-hung Windows w/Golden Oak Interiors, Pecan Oak Trim and Doors, Antique Mascarello Countertop, Green Exterior Door

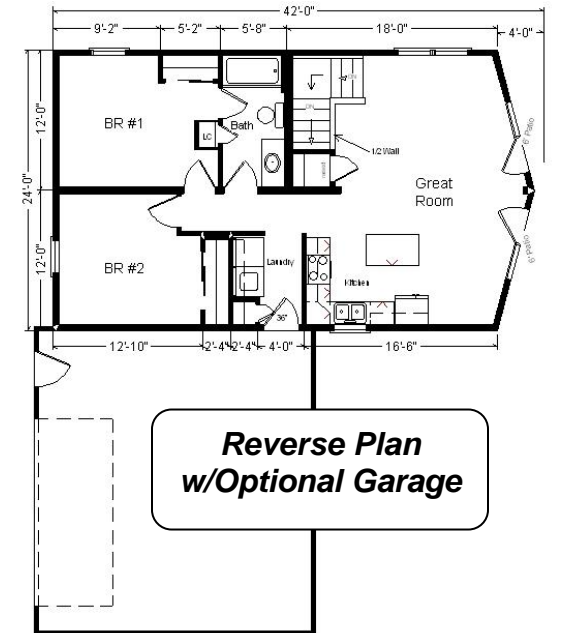
Zone 2

MN #BC146710



Jan 2017

**Price Includes: Delivery, Crane Work, All Blueprints, R55 Ceilings, R20 Exterior Walls, REAL Plywood Floors, Kohler Plumbing, Pella Windows, 200 Amp Service, All Applicable Tax and Much More!!**



**Reverse Plan w/Optional Garage**