

# Model #1

28x62 Ranch 1,736 sq. ft.

# Design Homes, Inc.

Eldridge, IA

(#10335 -4-6)



**Base Price: \$126,792.00**

**This Home Displays The Following Options:**

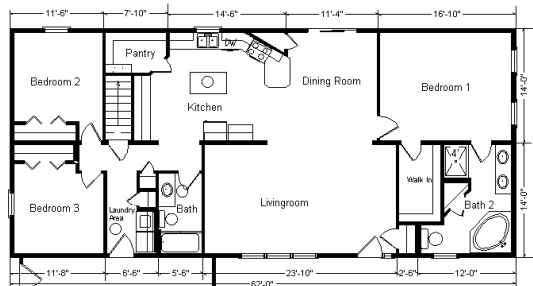
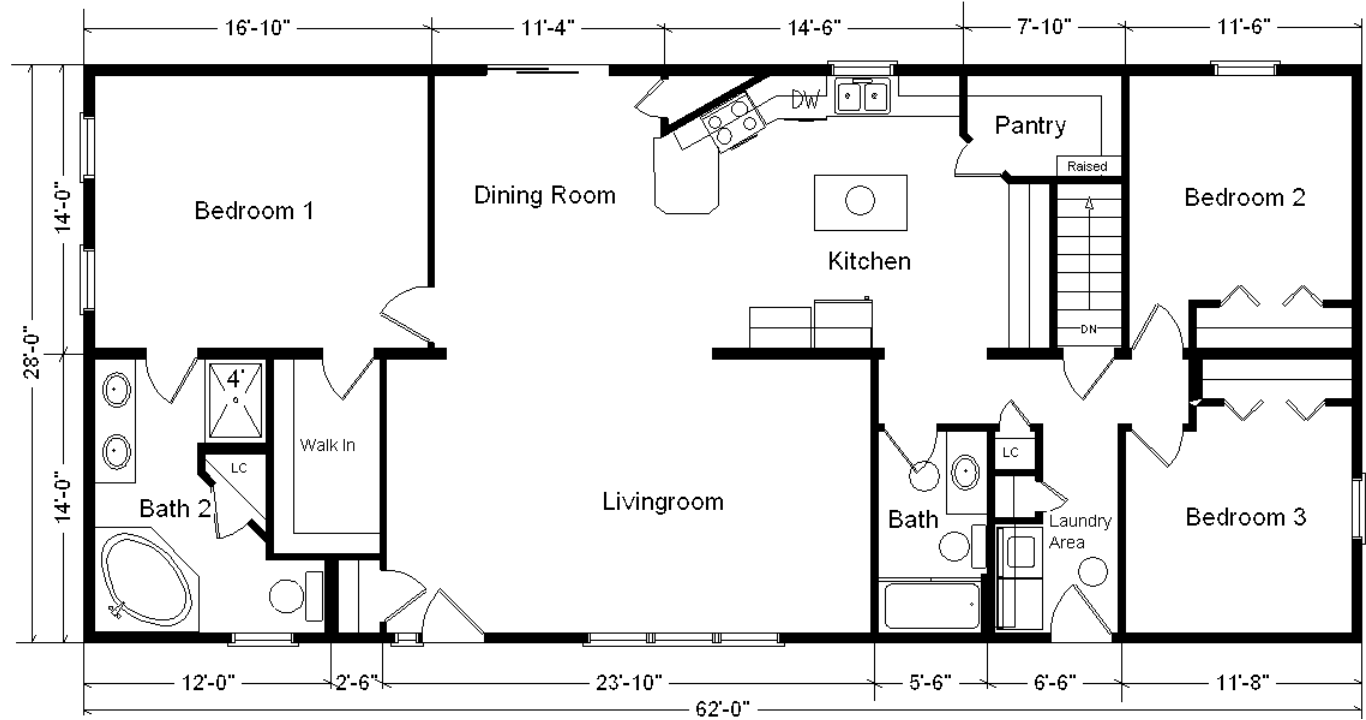
6/12 Roof Slope	3,038.00
Hip Roofs	4,068.00
Double Gable	2,358.00
Premium Color Siding	613.00
Window and Door Lineals	795.00
Upgrade Carpet (Adaptation)	1,085.00
Laminate Tile (Kit, DR, Utility, Foyer)	3,092.00
Vaulted Ceilings (LR, DR, Kit)	1,595.00
6 Panel Oak Doors (whole house)	4,515.00
Hi-Definition Kitchen Countertops	458.00
Quartz Kitchen Sink	332.00
Laundry Area w/Cherry Arch Cabinets	1,220.00
Wire for El. Range	100.00
Brush Nickel Bath Package	1,165.00
Extra 3/4 Bath	2,450.00
Capella Corner Whirlpool	3,200.00
Double Sink Vanity	725.00
Vanity Base Drawers (x3)	396.00
Shower Door (Bath #2)	285.00
Cultured Granite Vanity Tops (10')	590.00
Seneca Ridge Cherry Arch Cider Cabinets	4,265.00
8.5' Extra Base Cabinets	1,853.00
7.5' Extra Wall Cabinets	1,215.00
Deluxe Drawers/Plywood Ends (Kitchen)	1,450.00
Ceramic Tile Backsplash	350.00
Crown Molding Above Kit Cabinets (30')	480.00
8' Mullion Glass Door Wall Cabinets	680.00
Pull-down Kit. Faucet (K560BN)	235.00
WP SS Dishwasher (WDF320)	674.00
WP SS Microwave (WMH310)	404.00
Suntube (x3)	1,680.00
Pella Lifestyle Windows	3,611.00
Pella 6' Patio Door	2,786.00
Painted Exterior Doors (1 side)	272.00
Painted Sidelight (1 side)	116.00
Upgrade Front Entry Door (S684HRRN)	325.00
Sidelight 1/2 Glass (S692HRRN)	772.00

**Total With Options Shown: \$180,040.00**



### Color Information

*Certainteed Spruce Siding, Clay Trim, Weatherwood Shingles, Clay Lineals, Clay Outside Corners, White Baths, Flag Stone Carpet, 9510 Vinyls, 775 Berkley Laminate, Nero Kit. Sink, SS Dishwasher and Microwave, Nutmeg Oak Trim & Doors, Putty Dbl-hung Pella Windows, Antique Mascarello Countertop*



**Reverse Plan  
w/Future  
Garage**

**Price Includes: Delivery up to 200 miles from PdC, WI, Crane Work, All Blueprints, R55 Ceilings, R20 Exterior Walls, Kohler Plumbing, Pella Windows, 200 Amp Service, All Applicable Tax and Much More!!**

Feb. 2019

MN #BC146710

**This Display Home is Sold**