

Model #5

28x44 Ranch 1,232 sq. ft.

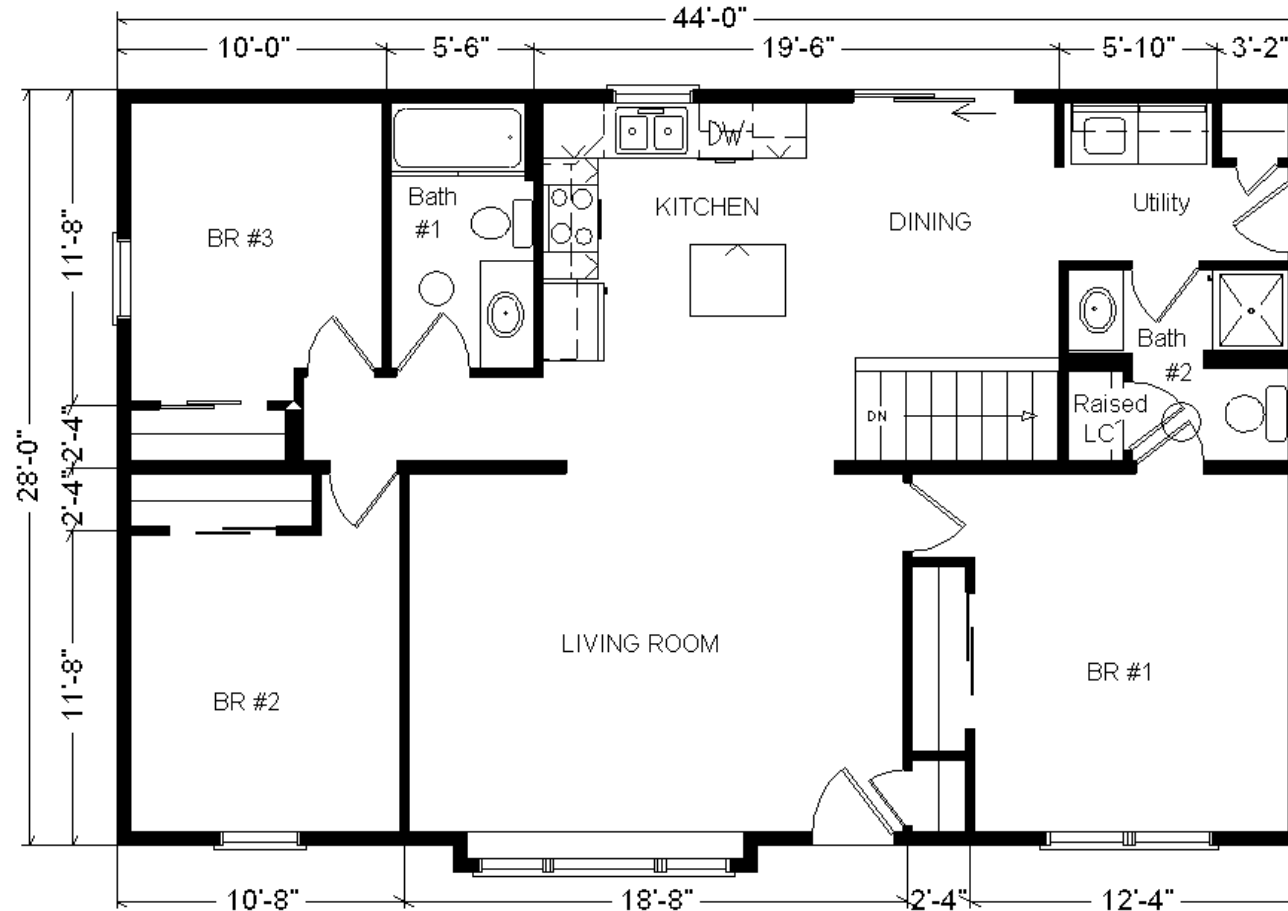
Design Homes, Inc.

Lathrop, MO

(#10271 -4-6)



Base Price:	\$103,852.00
This Home Displays The Following Options:	
6/12 Roof Slope	2,156.00
Double Gable	1,819.00
1' Bump-Out Window (LR)	859.00
Certainteed Premium Color Siding	498.00
Window and Door Lineals	539.00
Carpet Upgrade (Go Softly)	970.00
Pella Vinyl Dbl-hung Windows	750.00
Window Grilles GIA (x8)	520.00
Vaulted Ceilings (Kit,DR,LR)	1,144.00
Extra 3/4 Bath	2,450.00
Vanity Drawer Base (x2)	264.00
Shower Door (Bath#2)	285.00
Laundry Area w/Cabinets	750.00
Oil Rubbed Bronze Package	795.00
Spring Valley Med. Oak Cabinets	1,310.00
Deluxe Drawer Option (Kit.)	281.00
Crown Molding (23')	368.00
Custom Cabinets	269.00
Hi-Definition Kit. Countertop	245.00
Pull-out Kit. Faucet (K15160-CP)	146.00
Suntube (x2)	1,120.00
6' Pella Proline Patio Door	2,786.00
Total With Options Shown:	\$124,176.00



Color Information

Dbl. 4" Flagstone Siding, White Trim, Black Shingles, White Lineals, White Baths, #259 Parchment Vanity Tops, 91125 Vinyl's, Pueblo Carpet, SS Sink, Black Rangehood, White Dbl-hung Vinyl Windows, Antique Macarelo Countertop, Nutmeg Oak Trim and Doors

MN #BC146710

April. 2018

Zone 3

Price Includes: 100 Mile Delivery, Crane Work, All Blueprints, R55 Ceilings, R20 Exterior Walls, Kohler Plumbing, Pella Windows, 200 Amp Service, All Applicable Tax and Much More!!

Buy Display Model For: \$110,517.00!
(Discounted 13,659 !)

