

# Model #12

**FINISHED CAPE COD**  
**28 X 44 2082 sq. ft.**

# Design Homes, Inc.

(9736-0-3)

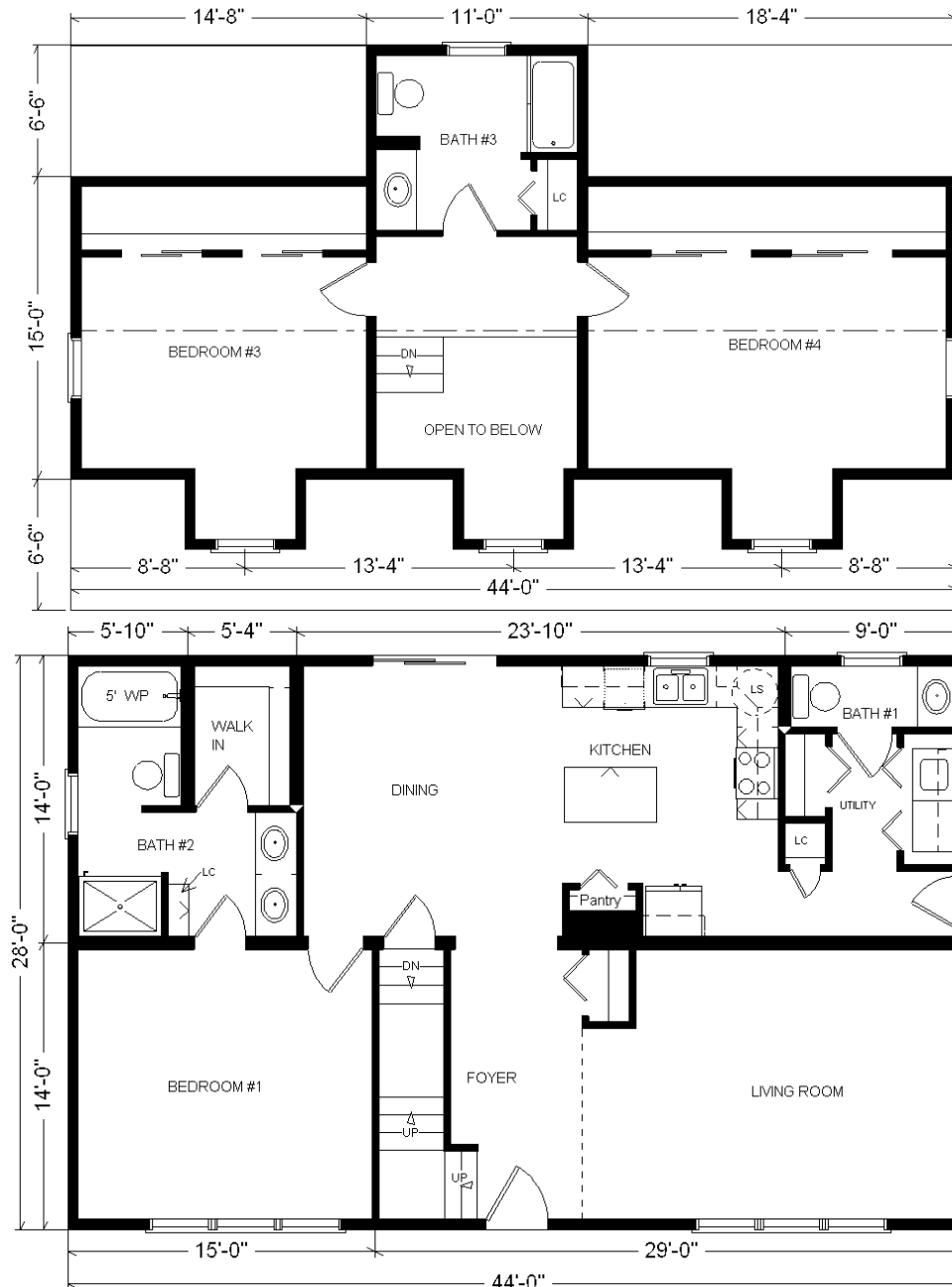


<b>Base Price:</b>	<b>\$144,274.00</b>
<b>This Home Displays The Following Options:</b>	
11' Shed Dormer	5,069.00
Extra 6' Gable Dormer	5,897.00
Extra Full Bath	2,450.00
Extra 1/2 Bath	1,800.00
Double Vanities	725.00
5' Whirpool	2,300.00
Shower Doors (Bath #2)	285.00
UC3084 Utility Cabinet (SV)	490.00
Laundry Area w/Cabinets	750.00
Spring Valley Med. Oak Cabinets	1,305.00
Shutters	336.00
Microwave (WMH1163)	354.00
Dishwasher (DU850)	504.00
Upgrade Front Door (S684FLR)	516.00
Extra BR #1 Window	285.00
6' Visions Patio Door	519.00
Energy Star Ready	375.00

**Total With Options Shown: \$168,234.00**

**Price Includes: Delivery in Zones 1 and 2, Crane Work, All Blueprints, R55 Ceilings, R20 Exterior Walls, REAL Plywood Floors, Kohler Plumbing, Pella Windows, 200 Amp Service, All Applicable Tax and Much More!!**

*Furnace and Duct Work Included and Installed in Zone 1 ONLY*



**This Display Home is Sold**

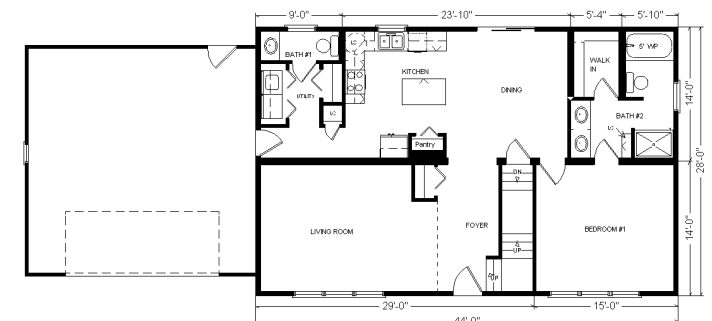


Zone 1

### Color Information

*St. Gray Siding, White Trim, Black Shingles, Black Shutters, White Baths, Coffee House Carpet, 91086 Vinyls, Nutmeg Oak Trim Doors, Black DW & Microwave, White Visions Sgl-hung Windows, Sage Coral Countertop*

### Reverse Plan w/Garage



MN #BC146710