

Model #6

24x42 Rustic Prow Ranch 960 sq. ft.

From Design Homes New Rustic Series!

Design Homes, Inc.

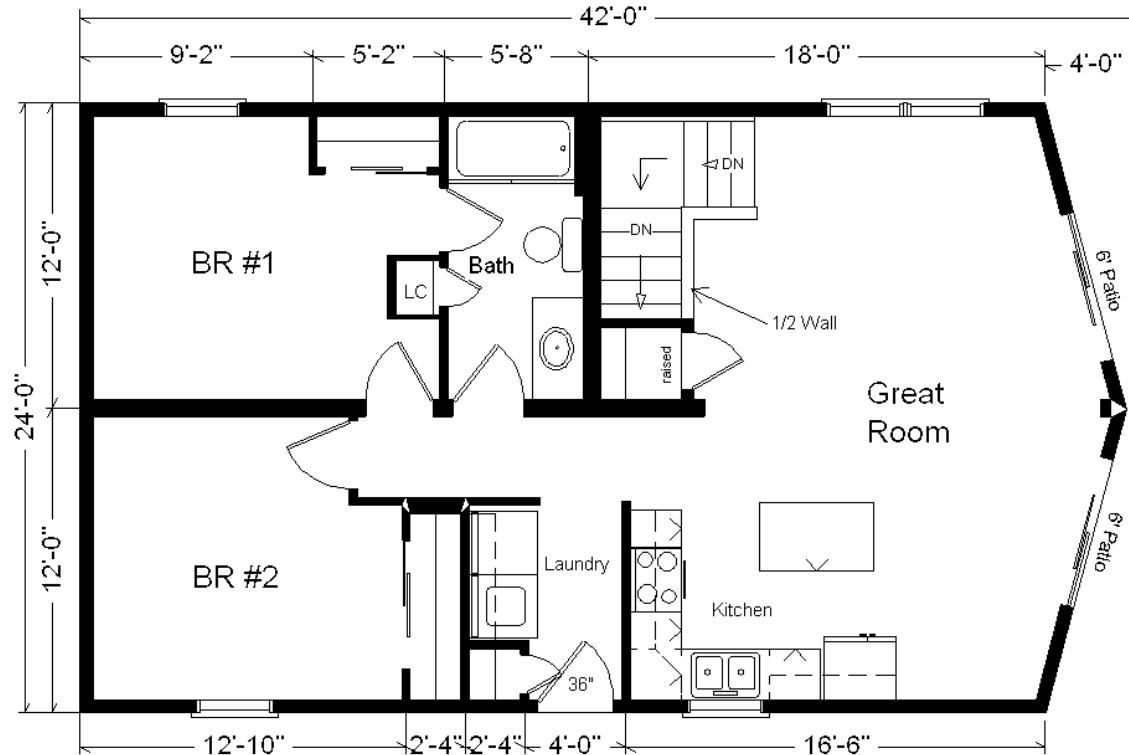
Urbana, IA

(#10486 -6-4)



| | |
|--|--------------------|
| Base Price: | \$70,854.00 |
| This Home Displays The Following Options: | |
| Premium Color Siding | 387.00 |
| Window and Door Lineals | 266.00 |
| Steel Roofing | 2,436.00 |
| Crown Molding (17') | 272.00 |
| Par.Truss/R49/Vaulted Great Room | 1,811.00 |
| DHI Paddle Fan/Light (LR) | 204.00 |
| 4 LED Can Lights on Dimmer (Kitchen) | 285.00 |
| Laundry Area w/Cabinets | 750.00 |
| ORB Bath Package | 495.00 |
| Vanity Drawer Base (VDDDB) | 226.00 |
| 6' Trapezoid Windows (x2) | 1,342.00 |
| 6' Pella Patio Doors (x2) | 2,188.00 |
| Painted Exterior Door (1 side) | 136.00 |
| 2nd Exterior Door Credit | -355.00 |

Total With Options Shown: \$81,297.00



MN #BC146710

ZONE 1

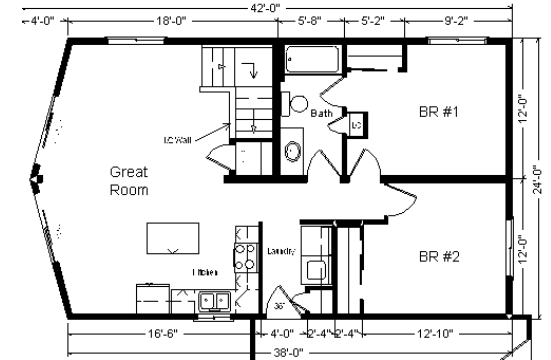
NOTE...Heating Systems are optional on all Design Home's Rustic and Basic Series in Zone 1

Price Includes: Delivery in Zone 1, Crane Work, All Blueprints, R55 Ceilings, R20 Exterior Walls, REAL Plywood Floors, Kohler Plumbing, Pella Windows, 200 Amp Service, All Applicable Tax and Much More!!



Jan 2017

Color Information
 Spruce Siding, Almond Trim, Clay Steel Roofing, Sav. Wicker Lineals, White Bath, Parchment Vanity, Truffle Carpet, SS Sink, 91180 Vinyl, Pella Almond Sngl-hung Vinyl Windows, Wheat Cabinets, Pecan Oak Trim and Doors, Black Rangehood, Butterum Granite Countertop, Tan Exterior Door



Reverse Plan w/Optional Garage