

Base Price: \$135,148.00

This Home Displays The Following Options:

6/12 Roof Slope	3,038.00
Hip Roof (Both Ends)	4,068.00
Large Gable	1,456.00
Extra Gable Detail	215.00
1' Bump-Out Of Small Window (Bath #2)	520.00
Upgrade Carpets	761.00
Mohawk Revwood Floor (DR, Util, Hall, Foyer)	NC
Vaulted Ceilings (LR, DR, Kit)	1,595.00
Gas Fireplace	5,600.00
Upgrade 6 Panel Oak Doors (x12)	2,580.00
Interior French Doors w/Glass	1,185.00
Paddle Fan Light (LR)	204.00
Wire For Electric Range	100.00
Extra 3/4 Bath	2,450.00
Laundry Area w/Cabinets	750.00
Rubbed Bronze Package	1,165.00
Corner Whirlpool	3,200.00
Double Sink Vanity	725.00
Vanity Base Drawers (x3)	285.00
Dual -Flush Elongated Toilet(x2)	174.00
Shower Door (Bath #2)	285.00
Tri View Medicine Cabinet (x2)	420.00
Vanity Top Upgrade (Cultured Granite 6')	354.00
Sutton Cliff Hickory Cabinets	4,150.00
8' Extra Base Cabinets	1,688.00
5.75' Extra Wall Cabinets	920.00
Ceramic Tile Backsplash	350.00
Crown Molding Above Kit Cabinets (28')	448.00
Hi-Macs Kitchen Counter Top	5,657.00
5' Mullion Glass Door Wall Cabinets	425.00
Base Drawer (BD3-24)	57.00
Cutting Board Kit (18")	173.00
Base Waste Top Mount Kit (18")	219.00
Tray Divider Roll Out (12")	132.00
Suntube (x2)	1,120.00
Peachtree Windows	5,626.00
Shutters	531.00
6' Citadel French Slider (Bdr. 1)	2,576.00
Upgrade Front Entry Door (SS684HRRB)	950.00
Sidelight Stained (SS692HRRB)	1,247.00
Interior/Exterior Door Lever Handles	283.00
14 x18 SR w/Gable Base Price	\$23,599.00
Vaulted Ceiling	542.00
Upgrade Carpet	211.00
Paddle Fan/Light	163.00
6' Citadel French Slider	2,576.00

Total With Options Shown: \$219,921.00

Design Homes, Inc.

Former Display Located in PdC, WI

(#9426 -9-4)

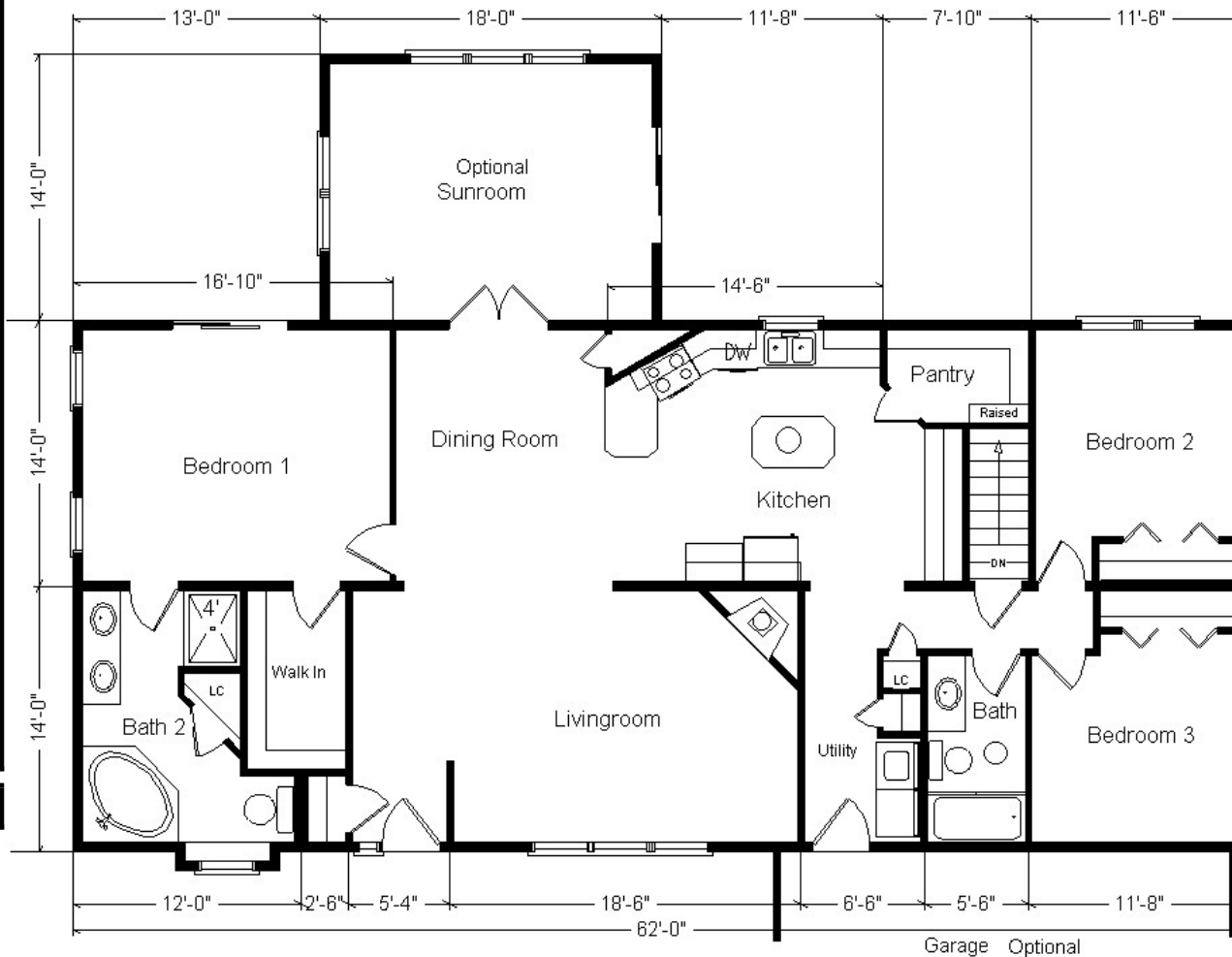
**28x62 Ranch w/Sunroom
1,988 sq. ft.
Model Not Set Up On Display**

**Buy Display Model
For:
\$170,536.00!
(Discounted 49,385 !)**

Price Includes: Delivery up to 200 miles from PdC, WI, Crane Work, All Blueprints, R55 Ceilings, R20 Exterior Walls, Kohler Plumbing, Peachtree Windows, 200 Amp Service, All Applicable Tax and Much More!!

Sept 2020

Color Information
Granite Gray Siding, White Trim, Black Shingles, Black Shutters, White Baths, Toffee Vanity Top Bath #2, Stonedust Carpet, Dune Carpet in BR#1 and Closet, 91066 Vinyls, Boathouse Brown Revwood, SS64-3221 Sink, Nutmeg Oak Trim & Doors, SS Appliances, Peachtree White Dbl-hung Windows, Delta Sand Countertop, Black



MN #BC146710

