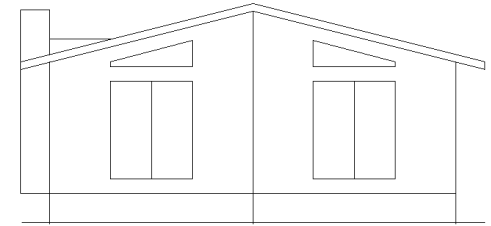


28x48 Prow  
Ranch  
1,288 sq. ft.

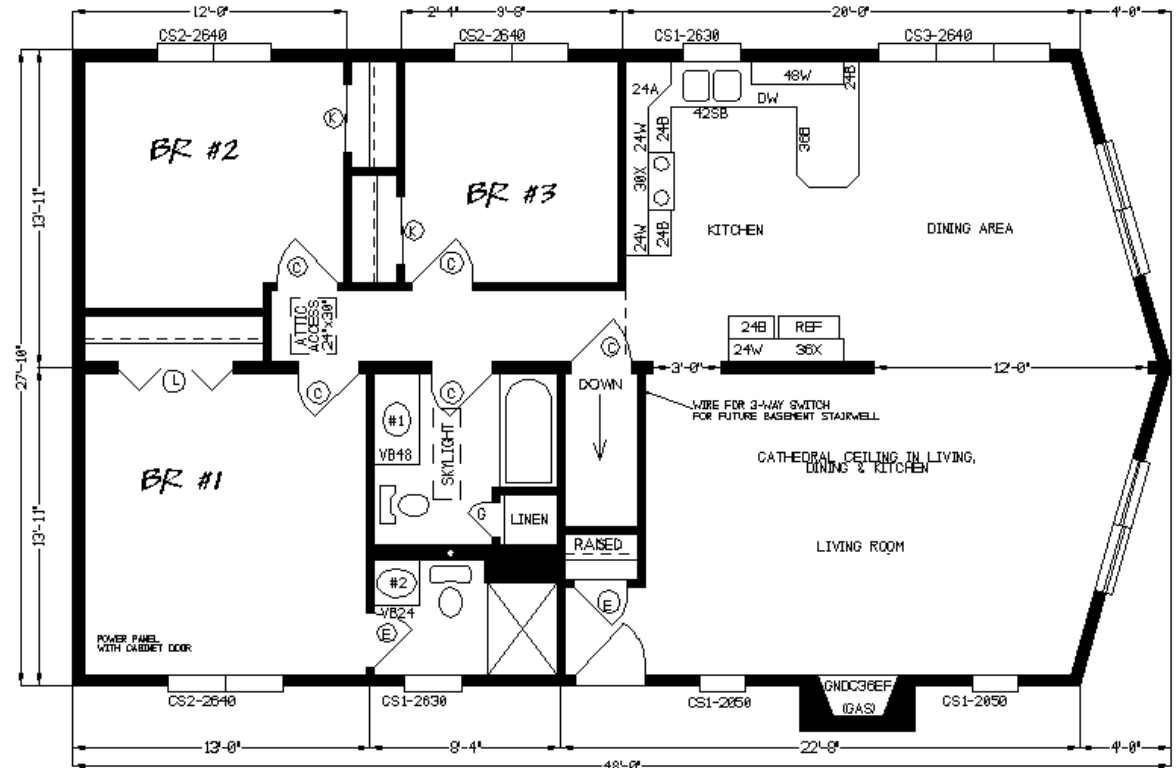
# Design Homes, Inc.

Former Display Now in PdC, WI  
(#5262 -8-1) "built in 1998"



<b>Base Price:</b>	<b>\$99,648.00</b>
<b>This Home Displays The Following Options:</b>	
Outside Chimney Chase	1,350.00
2x12 Rafters w/Vaulted Ceiling (K,DR,LR)	1,811.00
Vinyl Log Siding	8,690.00
Wood Laminate (K/Din/Hall/Foyer)	1,223.00
Gas Fireplace	5,600.00
Ceiling Fan w/Lights (x2)	313.00
Extra 3/4 Bath	2,450.00
Tri View Medicine Cabinet (x2)	260.00
Homestead Oak Medium Cabinets	1,305.00
WP Appliance package (Stainless Steel)	3,065.00
Skylight	725.00
Visions Vinyl Casement Windows	2,195.00
2-6' Trapezoid Windows (Pella Vinyl)	1,700.00
2-6' Visions Patio Doors	1,732.00
Exterior Door Credit	-350.00

**Total With Options Shown: \$131,717.00**



Buy Display Model For:  
**\$109,325.00!**  
(discounted 22,392.00!)  
Sold "AS IS"

ZONES 1 & 2

Price Includes: Delivery, Crane Work, All Blueprints, R20 Exterior Walls, REAL Plywood Floors, Kohler Plumbing, 200 Amp Service And Tax!!  
Delivery Charges will apply to Zone 3.

**Color Information**  
HB Vinyl Log Siding, Bronze Trim, Weathered Wood Shingles, Coffee House Carpet, 188 Abbeyville Hickory Laminate, White Bath #1, Almond Bath #2, SS Appliances, Symmetry Countertop,  
91082 Vinyl Flooring, Visions Tan Casement Windows, Dew Beige FP Front, Homestead Oak Cabinets, Nutmeg Oak Trim and Doors, Brass Hardware, Popcorn Ceiling Texture

**Home History....**  
This home was used as an office model, but not lived in, since 1998. A new roof with Landmark Shingles was installed in 2010. We just recently put in New Windows, Patio Doors and Trapezoid Windows. We also installed New Carpets and Laminate Wood floorings. This home is not on display but can be looked at in it's disassembled state (2 pcs.) in PdC, WI.