

Model #7

28x50 Ranch 1,418 sq. ft.

Design Homes, Inc.

Ames, IA
(#6809 -1-4)

Feb. 2009



Base Price: \$80,815.00

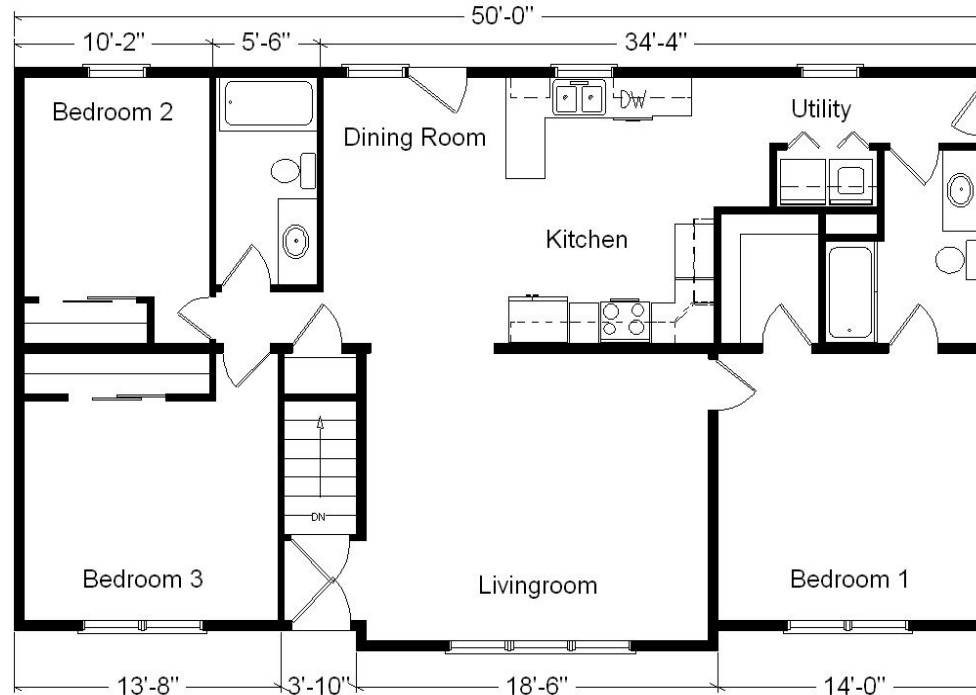
This Home Displays The Following Options:

* 5' Roof Rise (3.91/12 Slope)	1,250.00
Rev Vault Gable-1' Bump-Out	2,674.00
Carpet Upgrade (WL)	980.00
Vaulted Ceiling (Kitchen, DR)	476.00
Paddle Fan Light (x2)	252.00
Tv/Phone Box	13.00
Extra Full Bath	1,839.00
Utility Hook-Ups w/Northport Cabinets	695.00
Tri View Medicine Cabinet (x2)	240.00
Base Cabinet Drawer (BD3 36)	56.00
Lazy Susan	260.00
* Kolbe 4' Radius Top Window (LR)	492.00
Skylight (Polycarbonated)	495.00
* Kolbe Double Hung Windows	500.00
* 6' Peachtree French Door (DR-Prado)	566.00

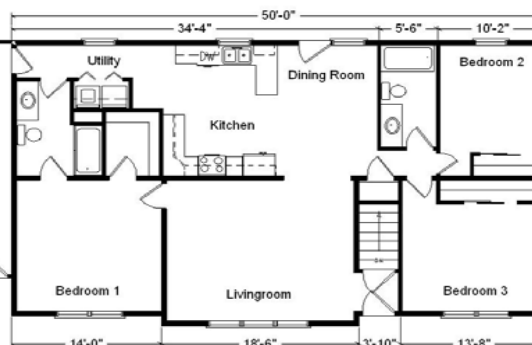
Total With Options Shown: \$91,603.00

* Item/Brand Name No Longer Available

Drapes & appliances shown are optional and not included in Total price.



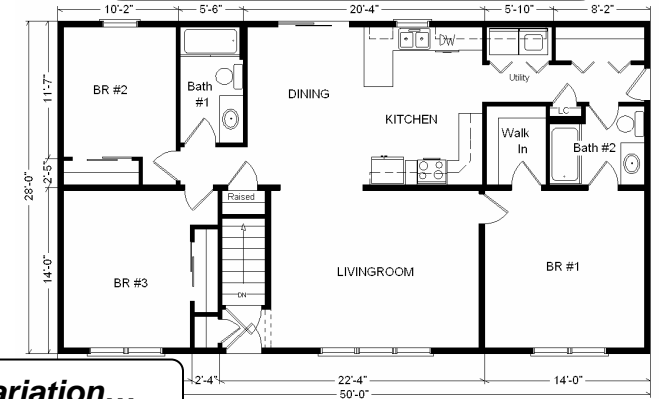
**Reverse Plan
w/Optional
Garage Shown**



Color Information
Natural Clay Siding, White Trim, Black Shingles, SS Sink, Black Shutters, Standard Trim & Doors, White Baths, Mortar Carpet, 91020 Vinyl, White Kolbe Doublehung Windows, Almond Woodsong Countertop, Chadwood Cabinets

Price Includes All Blueprints, Delivery, Crane Work, Water Heater, Finish Ready For Hookups, Lennox Furnace Installed, & Tax!

Variation...



Base Price:..... \$ 80,815.00
With the most Popular Options:

Whirlpool Dishwasher.....	439.00
6' Patio Door.....	481.00
Extra Full Bath.....	1,839.00
Utility Area w/Cabinets.....	695.00
Central Air.....	2,140.00
Variation Total w/Options:.....	\$86,409.00