

Model #1

28x42 Cape Cod 1,859 sq. ft.

Design Homes, Inc.

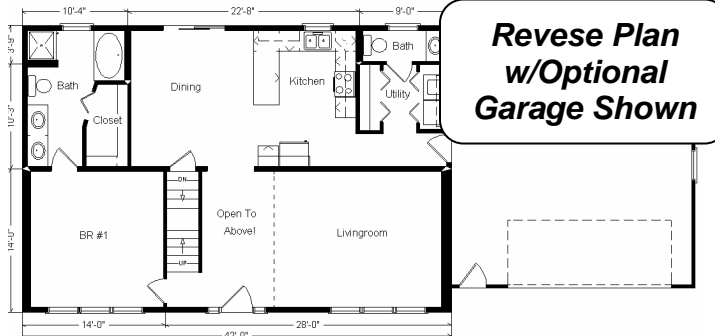
Burlington, IA
(#7960 -4-1)



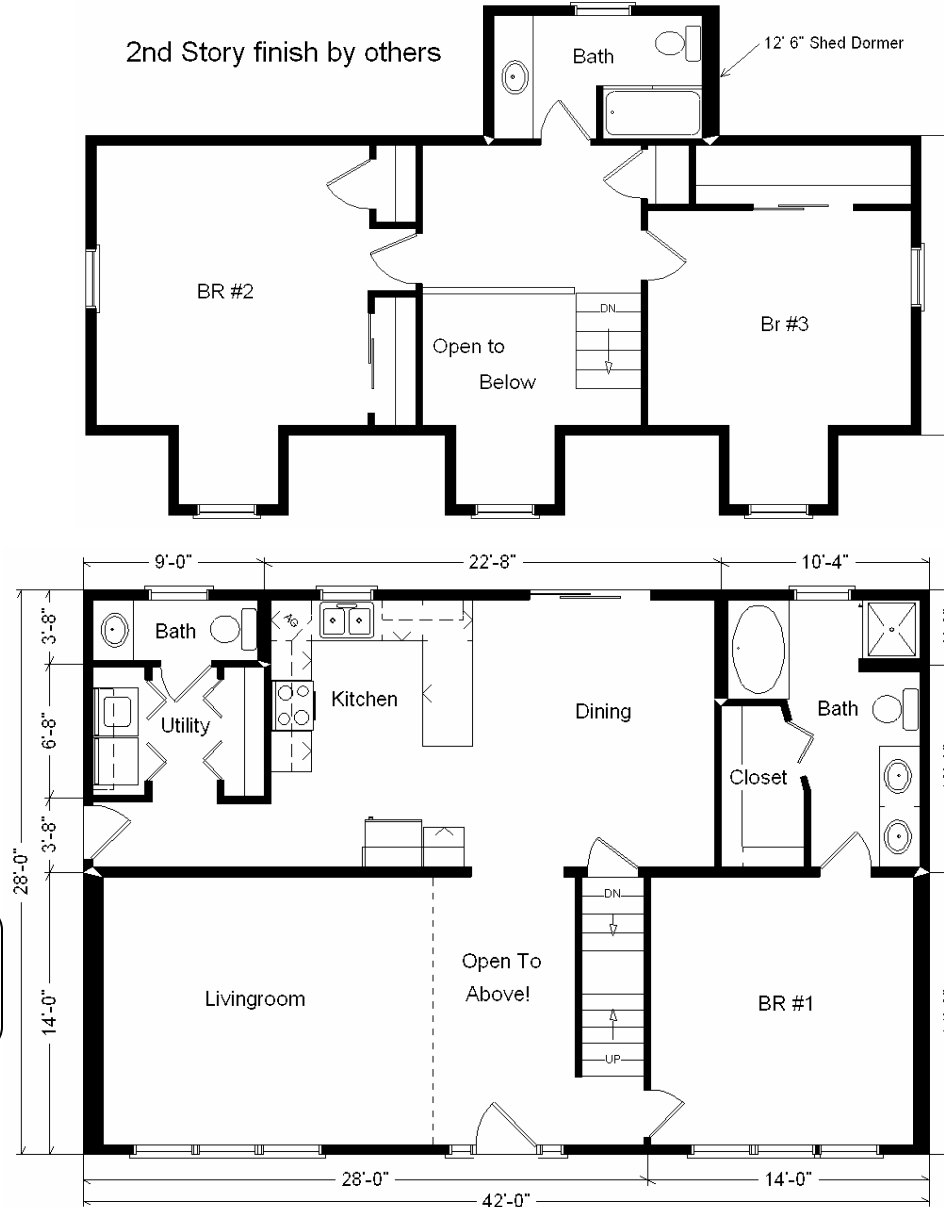
Base Price:	\$86,951.00
This Home Displays The Following Options:	
12' Shed Dormer	3,973.00
Extra 6' Gable Dormer	3,711.00
Upgrade Siding (Mastic-Quest)	2,628.00
Upgrade Carpet (WL)	627.00
Ceramic Tile (Foyer)	226.00
Oak Doors & Trim	950.00
TV Phone Box	13.00
Extra 1/2 Bath	1,035.00
Utility Area w/Northport Cabinets	695.00
Cast Iron Sink	284.00
Double Sink Vanity	565.00
Tri View Medicine Cabinet (x3)	360.00
4x5 Garden Tub	769.00
Seneca Ridge Cabinets	2,137.00
* GE Dishwasher	421.00
* Kolbe Vinyl Windows	500.00
Extra Window (Bdr #1)	325.00
Window Grilles (GIA x15)	585.00
2-Sidelights Full Glass S4 (Foyer)	944.00
* 6' Peachtree French Slider (DR-Prado)	610.00

Total With Options Shown: \$108,309.00

* Item/Brand Name No Longer Available



**Reverse Plan
w/Optional
Garage Shown**



Variation...

Color Information
*Glacier Blue Siding, White Trim, Black Shingles,
 Kolbe Double-hung White Windows, Black Shutters
 Mortar Carpet ,91050 Vinyl, White Vanity Tops, Bisque
 Baths, Natural Limestone Countertop, Nutmeg Oak
 Trim and Doors, Bisque Rangehood and DW*

**Price
 Includes All
 Blueprints,
 Delivery,
 Crane Work,
 Water
 Heater,
 Finish
 Ready For
 Hookups,
 Lennox
 Furnace
 Installed, &
 Tax!**

Base Price:	\$ 86,951.00
With the most Popular Options:	
Whirlpool Dishwasher.....	439.00
Utility Hook-ups.....	395.00
6' Patio Door.....	481.00
½ Bath.....	1,035.00
Double Vanity Sinks.....	565.00
Variation Total w/Options:..	\$89,866.00

**Buy Display Model For:
 \$96,395.00!
 (discounted 11,914.00!)**