

# Model #7

28x62 Ranch w/SR 1,988 sq. ft.

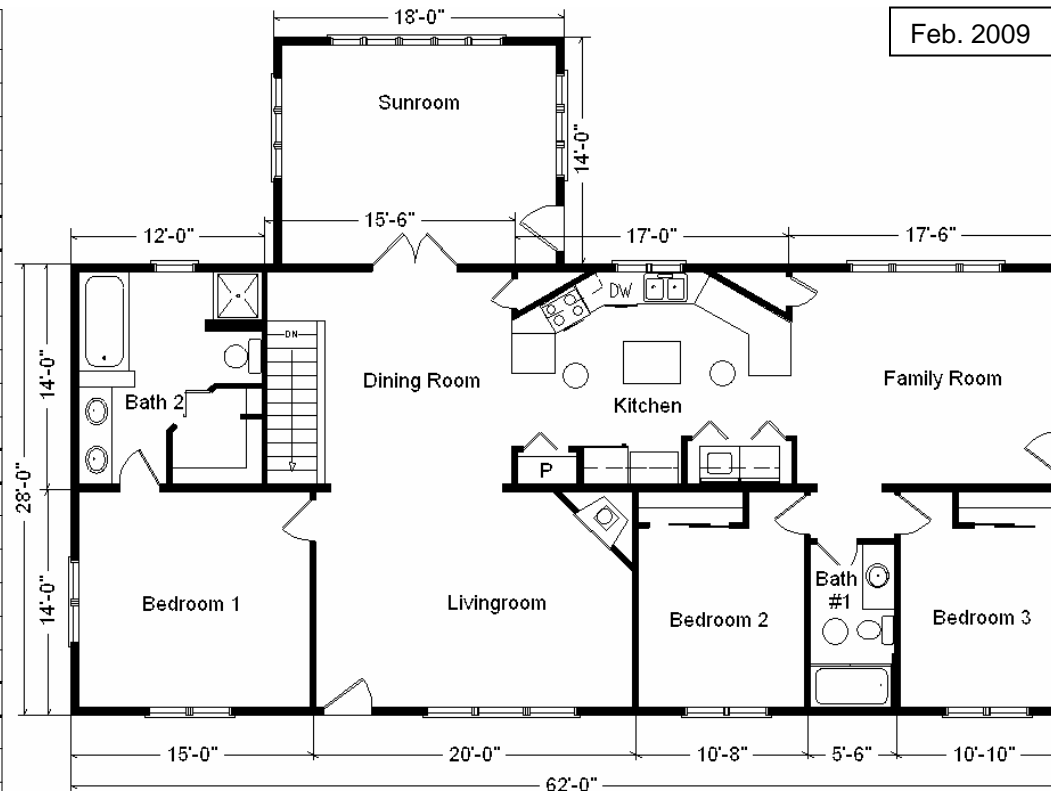
# Design Homes, Inc.

Burlington, IA  
 (#9364 -8-4)



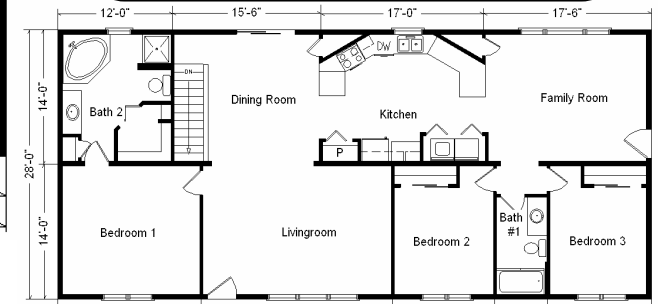
Feb. 2009

<b>Base Price:</b>	<b>\$94,314.00</b>
<b>This Home Displays The Following Options:</b>	
6/12 Slope	2,728.00
Large Gable	1,074.00
Upgrade Carpet (WL)	935.00
Gas Fireplace	3,159.00
Vaulted Ceilings (LR, DR, Kitchen Fm Rm)	1,630.00
Oak Trim & Doors	1,150.00
Interior French Doors w/Glass	534.00
Tv/Phone Box	13.00
Extra 3/4 bath	1,839.00
Utility Hook-Up w/Northport Cabinets	695.00
Brush Nickel Package	1,210.00
Tri View Medicine Cabinets (x3)	360.00
Double Sink Vanity	565.00
6' Whirlpool	1,950.00
Vanity Drawer Upgrade (x3)	264.00
Seneca Ridge Oak Cabinets	2,137.00
Moveable Island	592.00
Whirlpool Dishwasher (DU850SWP)	439.00
Suntube (x3)	1,590.00
Vision Casement Windows (Bdr. 1,2,3)	1,692.00
Upgrade Living Room Window (CS3-3050)	114.00
Upgrade Front Entry Door-Stained	1,117.00
<b>Home Total w/Options</b>	<b>\$120,101.00</b>



**Color Information**  
 Natural Clay Siding, Clay Trim,  
 Driftwood Shingles,  
 Brown Shutters, White Baths, Barley  
 Carpet, 91082 Vinyl, Bisque Rangehood  
 and DW, SS Sink  
 Nutmeg Oak Trim & Doors,  
 Tan Casement Vinyl Windows,  
 Natural Limestone Countertop

**Price Includes All Blueprints,  
 Delivery, Crane Work,  
 Water Heater,  
 Finish Ready For Hookups,  
 Lennox Furnace Installed, & Tax!**

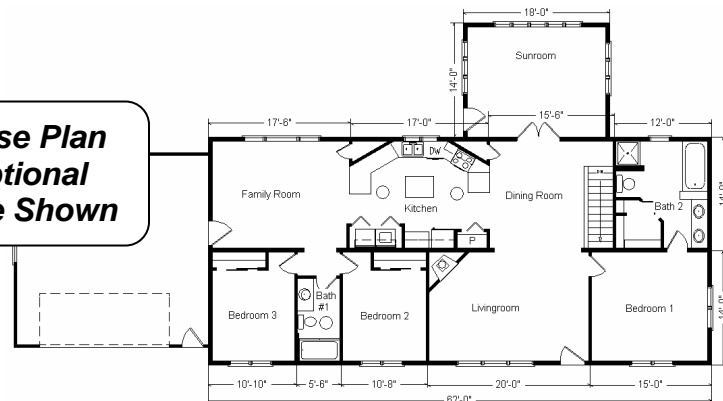


Variation...

<b>14 x 18 Sunroom w/Gable Base Price</b>	<b>\$16,331.00</b>
Upgrade Carpet (WL)	296.00
Vaulted Ceiling	405.00
5 Section Casement Window	784.00
3 Section Casement Window (x2)	1,994.00
<b>Sunroom Total w/Options</b>	<b>\$19,810.00</b>

**Total With Options Shown: \$139,911.00**

**Reverse Plan  
 w/Optional  
 Garage Shown**



<b>Base Price:</b>	<b>\$ 94,314.00</b>
<b>With the most Popular Options:</b>	
Whirlpool Dishwasher	439.00
Utility Hook-ups	395.00
6' Patio Door	481.00
¾ Bath	1,839.00
Corner Soaker Tub	1,300.00
<b>Variation Total w/Options:..</b>	<b>\$98,768.00</b>