

# Model #8

28x50 Ranch 1,418 sq. ft.

# Design Homes, Inc.

Burlington, IA

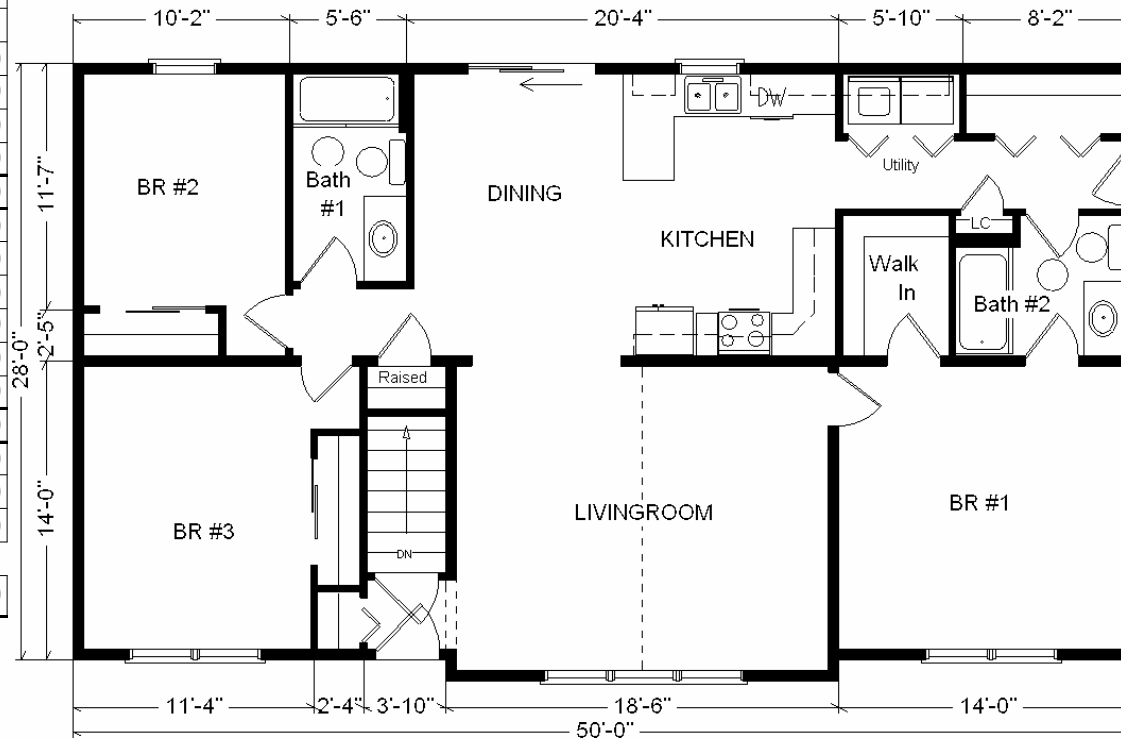
(#8468 -5-3)



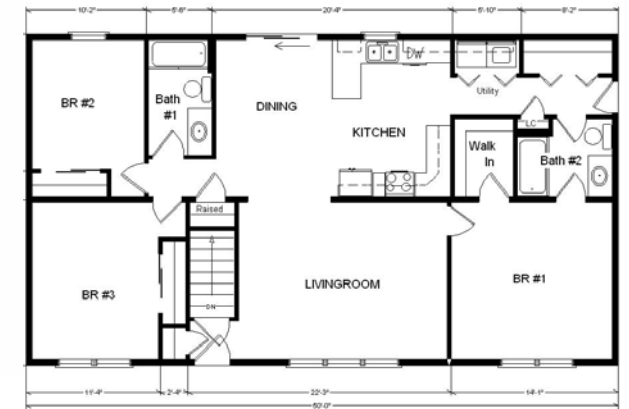
Feb. 2009

<b>Base Price:</b>	<b>\$80,815.00</b>
<b>This Home Displays The Following Options:</b>	
* 6' Roof Rise (4.68/12 Slope)	1,650.00
Rev Vault Gable-1' Bump-Out	2,674.00
Carpet Upgrade (WL)	980.00
Vaulted Ceilings (Kitchen, DR)	476.00
Tv/Phone Box	13.00
Extra Full Bath	1,839.00
Utility Hook-Ups w/Northport Cabinets	695.00
Tri View Medicine Cabinet (x2)	240.00
Vanity Base Drawer (x2)	176.00
Lazy Susan	260.00
* GE Dishwasher	421.00
* Kolbe 4' Radius Top Window (LR)	492.00
Suntube (x2)	1,060.00
* Kolbe Double Hung Windows	500.00
* 6' Kolbe Sliding Patio Door	581.00
<b>Total With Options Shown:</b>	<b>\$92,872.00</b>

\* Item/Brand Name No Longer Available

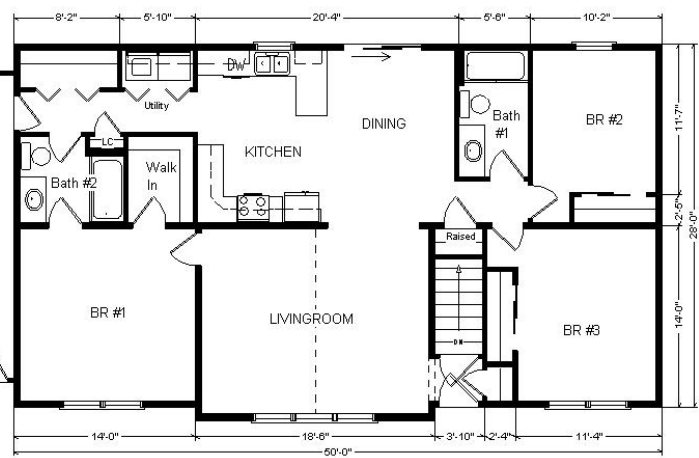


**Color Information**  
 St. Gray Siding, White Trim,  
 Black Shingles, Burgandy Shutters, Bisque  
 Baths, Mortar Carpet, 91066 Vinyls, SS Sink,  
 Standard Trim & Doors, Bisque Dishwasher &  
 Rangehood, Kolbe White Dbl-hung Windows,  
 Olive Organix Countertop



Variation...

Reverse Plan  
w/Optional  
Garage Shown



**Buy Display Model For:**  
**\$83,585.00!**  
 (discounted 9,287.00!)

**Price Includes All Blueprints,  
 Delivery, Crane Work, Water  
 Heater, Finish, Ready For  
 Hookups, Lennox Furnace  
 Installed & Tax!**

<b>Base Price:</b> .....	<b>\$ 80,815.00</b>
<b>With the most Popular Options:</b>	
Whirlpool Dishwasher.....	439.00
6' Patio Door.....	481.00
Extra Full Bath.....	1,839.00
Utility Area w/Cabinets.....	695.00
Central Air.....	2,140.00
<b>Variation Total w/Options:</b> .....	<b>\$86,409.00</b>