

Model #2

28x42 Loft 1,743 sq. ft.

Design Homes, Inc.

WI Dells, WI
 (#8625 -6-1)

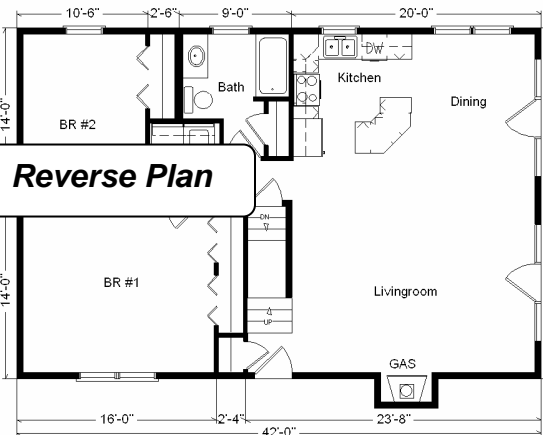
Feb. 2009



Base Price:	\$86,951.00
This Home Displays The Following Options:	
10' Shed Dormer	3,273.00
Outside Fireplace Chase	669.00
8" Insulated Vinyl Log Siding	6,314.00
Upgrade Carpet (Gorham)	591.00
Gas Fireplace	3,159.00
Oak Trim & Doors	950.00
Tv/Phone Box	13.00
Utility Hook-Up w/Northport Cabinets	695.00
Tri View Medicine Cabinets	120.00
Spring Valley Medium Cabinets	1,280.00
Crown Molding (19')	127.00
Mullion Glass Cabinet Door	65.00
* GE Dishwasher	421.00
* 2-9' Crestline Trapezoid Windows	5,402.00
* Crestline Wood Windows Unfinished	850.00
Painted Exterior Door	122.00
* 9' Crestline French Sw (DR)	2,060.00
* 9' Crestline French Sw (LR)	464.00
Door Credit	-240.00
Shutter Credit	-84.00

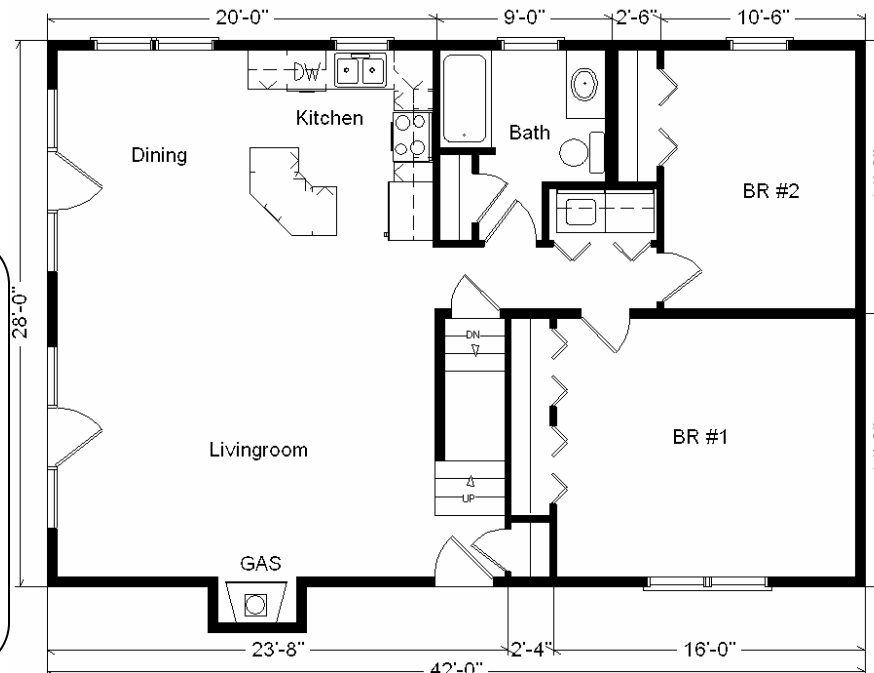
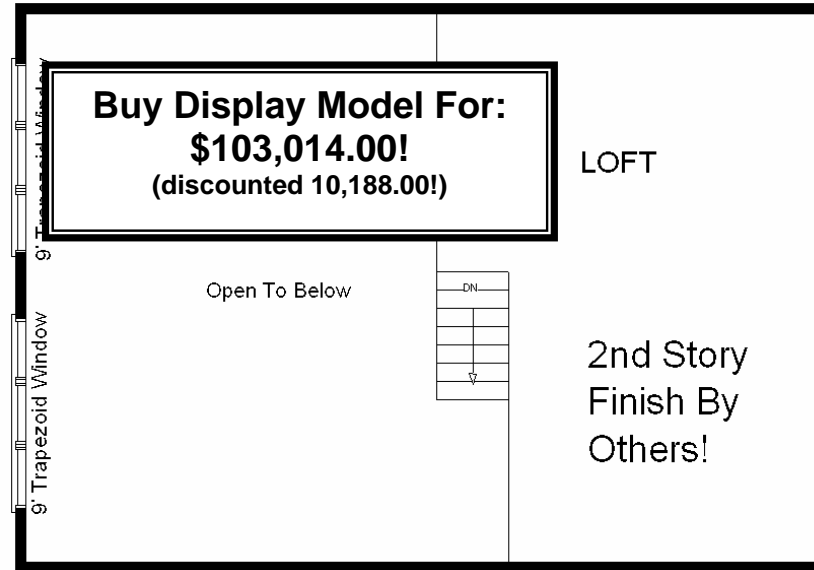
Total With Options Shown: \$113,202.00

* Item/Brand Name No Longer Available

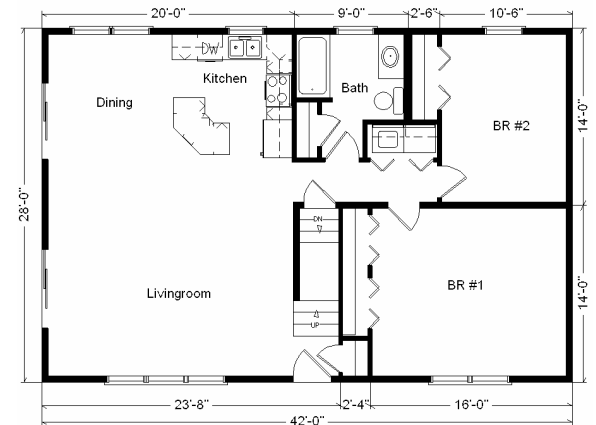


Reverse Plan

**Price Includes
 All Blueprints,
 Delivery, Crane
 Work,
 Water Heater,
 Finish Ready
 For Hookups,
 Lennox
 Furnace
 Installed, &
 Tax!**



Color Information
 Vinyl Log Siding Harvest Brown,
 Clay Facia/Trim, Black Shingles, No Shutters, White
 Bath, Organic Olive Carpet, 91082 Vinyls,
 Nutmeg Oak Trim & Doors, SS Sink, Crestline
 Double Hung Windows Taupe, White Dishwasher,
 Black Fireplace Front Sage Coral Countertop,
 Spring Valley Medium Cabinets



Variation...

Base Price:	\$ 86,951.00
With the most Popular Options:	
Whirlpool Dishwasher	439.00
Utility Hook-ups	395.00
2-6' Patio Doors	1,610.00
2-6' Trapezoid Windows	3,478.00
Central Air	2,140.00
Variation Total w/Options:	\$95,013.00