

Design Homes, Inc.

Fond du Lac, WI
 (#7723 -4-3)

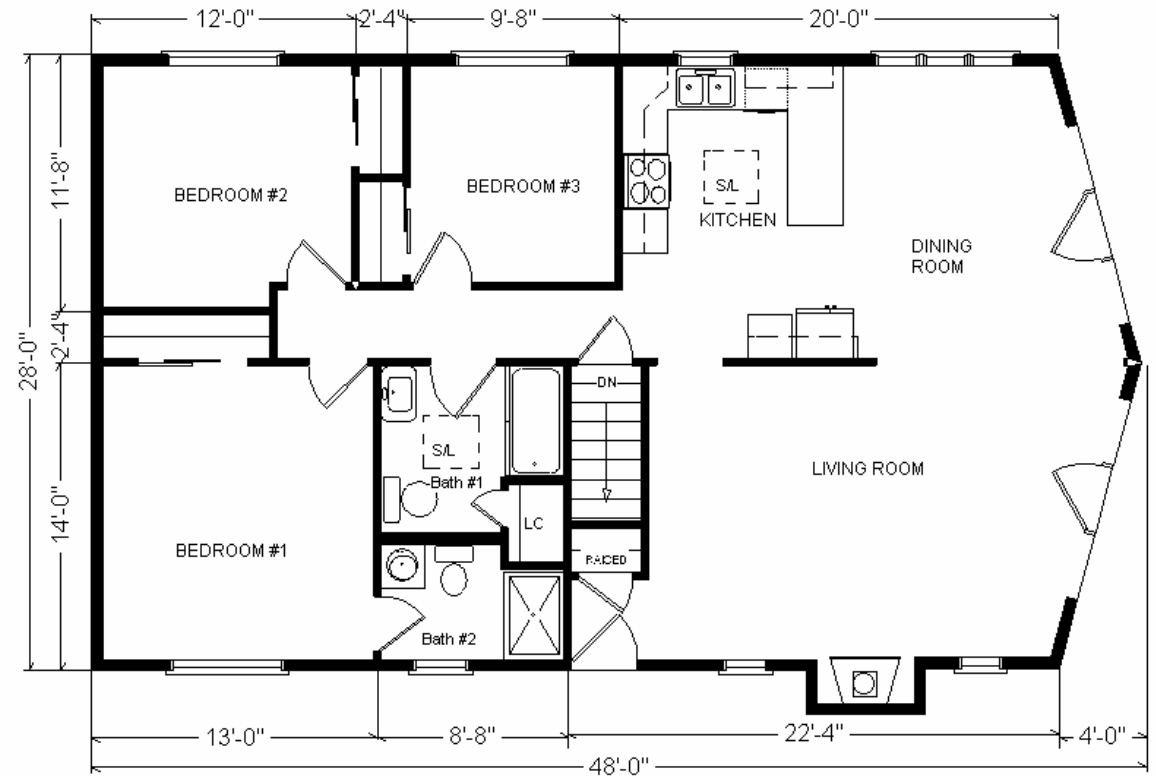


Model #2
28x48 Prow Ranch 1,288 sq. ft.

Base Price:	\$78,566.00
This Home Displays The Following Options:	
Outside Chimney Chase	669.00
Mastic/Quest Vinyl Siding	1,872.00
Laminate Flooring (Kitchen, DR, Hall)	1,262.00
Upgrade Carpet (Gorham)	724.00
Gas Fireplace	3,159.00
2x12 Rafters & Vaulted Ceilings	1,673.00
Oak Trim & Doors	950.00
Ceiling Fan w/Lights (x2)	290.00
Extra 3/4 Bath	1,839.00
Shower Door	160.00
Sutton Cliff Hickory Cabinets	4,069.00
36" Wide Snack Bar	185.00
Skylight (x2)	1,366.00
* Crestline Windows (Unfinished)	850.00
Casement Window Upcharge	2,277.00
Octogon Windows (x2 LR)	926.00
* 9' Crestline French Doors (x2)	2,524.00
* 9' Crestline Trapezoid Windows (x2)	3,272.00
Exterior Door Credit	-240.00

Total With Options Shown: \$106,393.00

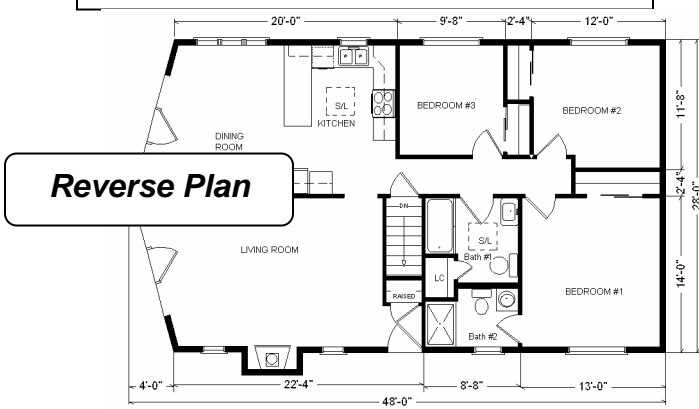
* Item/Brand Name No Longer Available



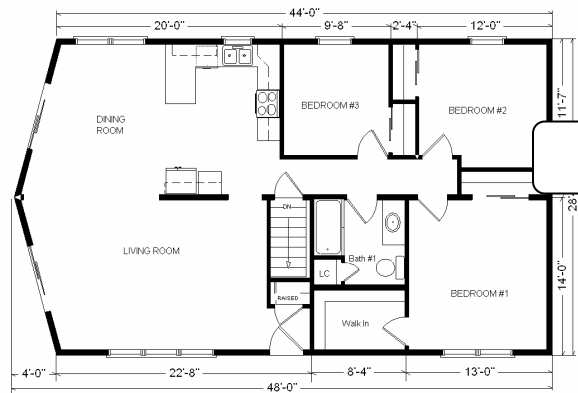
Color Information
 Timberstone Siding, Clay Trim, Horizon Brown Shingles, No Shutters, Verde Jaguar Green Countertops, SS Appliances, Stonedust Carpet, 91057 Vinyls, Nordic Maple Laminate SS Sink, Nutmeg Oak Trim & Doors, Crestline Taupe Casement Windows, White Baths, Black FP Front

Feb. 2009

Price Includes All Blueprints, Delivery, Crane Work, Water Heater, Finish Ready For Hookups, Lennox Furnace Installed, & Tax!



Drapes & appliances shown are optional and not included in Total price.



Variation...

Base Price:	\$ 78,566.00
With the most Popular Options	
2-6' Patio Doors.....	1,610.00
Vaulted Ceilings.....	1,106.00
Whirlpool Dishwasher	439.00
Central Air.....	2,140.00
Variation Total w/Options:	\$83,861.00