

# Model #6

28x44 Ranch 1,232 sq. ft.

# Design Homes, Inc.

Ham Lake, MN  
(#8795 -6-3)



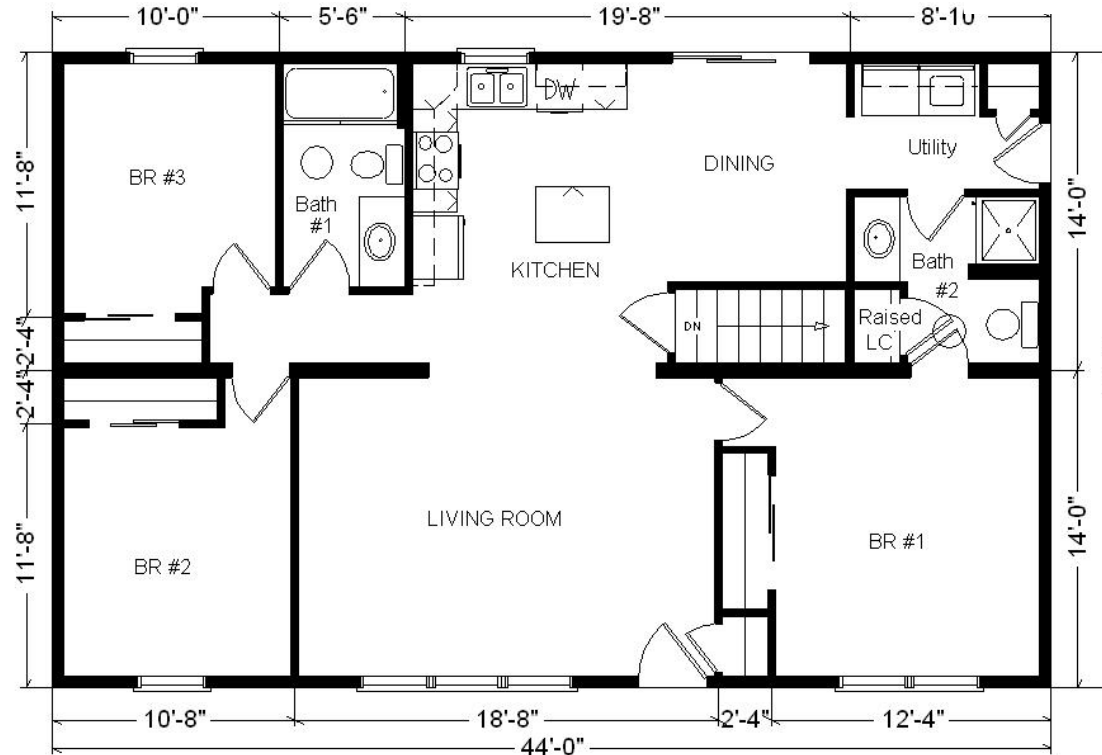
Feb. 2009

<b>Base Price:</b>	<b>\$74,067.00</b>
<b>This Home Displays The Following Options:</b>	
* 6' Roof Rise (4.68/12 Slope)	1,452.00
Carpet Upgrade (WL)	889.00
Vaulted Ceilings (Kitchen, DR, LR)	856.00
Tv/Phone Box	13.00
Extra 3/4 Bath	1,839.00
Utility w/Spring Valley Cabinets	870.00
Vanity Base Drawer (x2)	176.00
Whirlpool Dishwasher (DU850SWP)	439.00
Suntube (x2)	1,060.00
* Kolbe Dbl-Hung Windows	500.00
* 6' Kolbe Sliding Patio Door (DR)	581.00

**Total With Options Shown: \$82,742.00**

\* Item/Brand Name No Longer Available

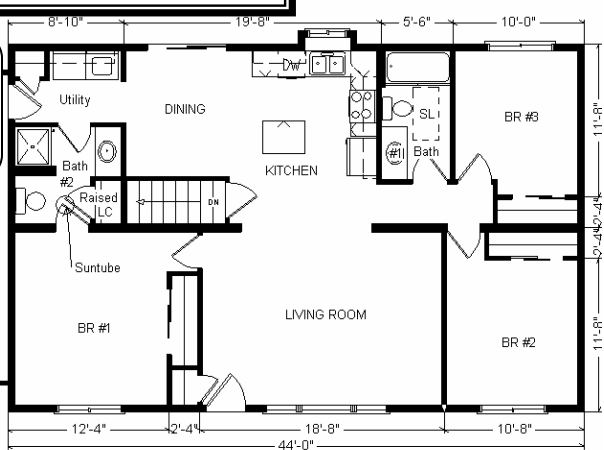
**Buy Display Model For:**  
**\$75,295.00!**  
(discounted 7,447.00!)



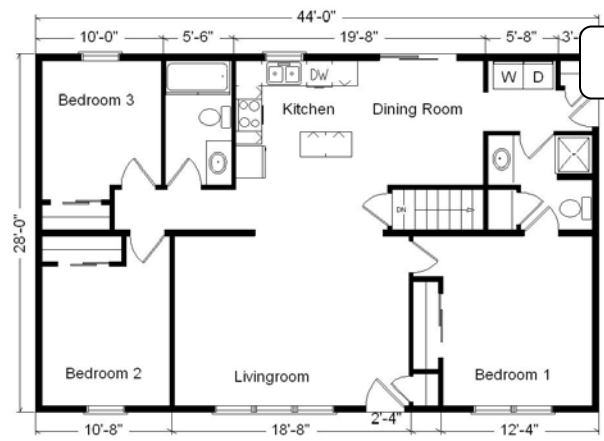
**Color Information**  
S. Wicker Siding, Beige Trim,  
W. Wood Shingles,  
Green Shutters, White Baths, Mortar  
Carpet, 91050 Vinyls, SS Sink,  
Standard Trim & Doors, White Dishwasher,  
Beige Kolbe Dbl-hung Vinyl Windows,  
Sand Nebula Countertop

**Price Includes All Blueprints,  
Delivery, Crane Work,  
Water Heater,  
Finish Ready For Hookups,  
Lennox Furnace Installed, & Tax!**

**Reverse Plan  
w/Optional  
Garage Shown**



**Variation...**



<b>Base Price:</b> .....	<b>\$ 74,067.00</b>
<b>With the most Popular Options:</b>	
Whirlpool Dishwasher.....	439.00
Utility Hook-ups.....	395.00
6' Patio Doors.....	481.00
¾ Bath.....	1,839.00
Central Air.....	2,140.00
<b>Variation Total w/Options:..</b>	<b>\$79,361.00</b>