

Model #3

28x44 Ranch 1,232 sq. ft.

Design Homes, Inc.

Missouri Valley, IA

(#8503 -5-3)



Base Price:	\$74,067.00
This Home Displays The Following Options:	
* 6' Roof Rise (4.68/12 Slope)	1,452.00
Carpet Upgrade (WL)	856.00
Vaulted Ceilings (Kitchen,DR,LR)	856.00
Cherry Oak Trim & Doors	1,093.00
Tv/Phone Box	13.00
Extra 3/4 Bath	1,839.00
Utility w/Northport Cabinets	695.00
Cast Iron Sink	284.00
Shower Door (Bath#2)	160.00
* GE Dishwasher	421.00
Suntube (x2)	1,060.00
* Kolbe Double Hung Windows	500.00
* 6' Kolbe Sliding Patio (DR)	581.00
* Credit for Cabs. Not Matching Trim	-2,000.00

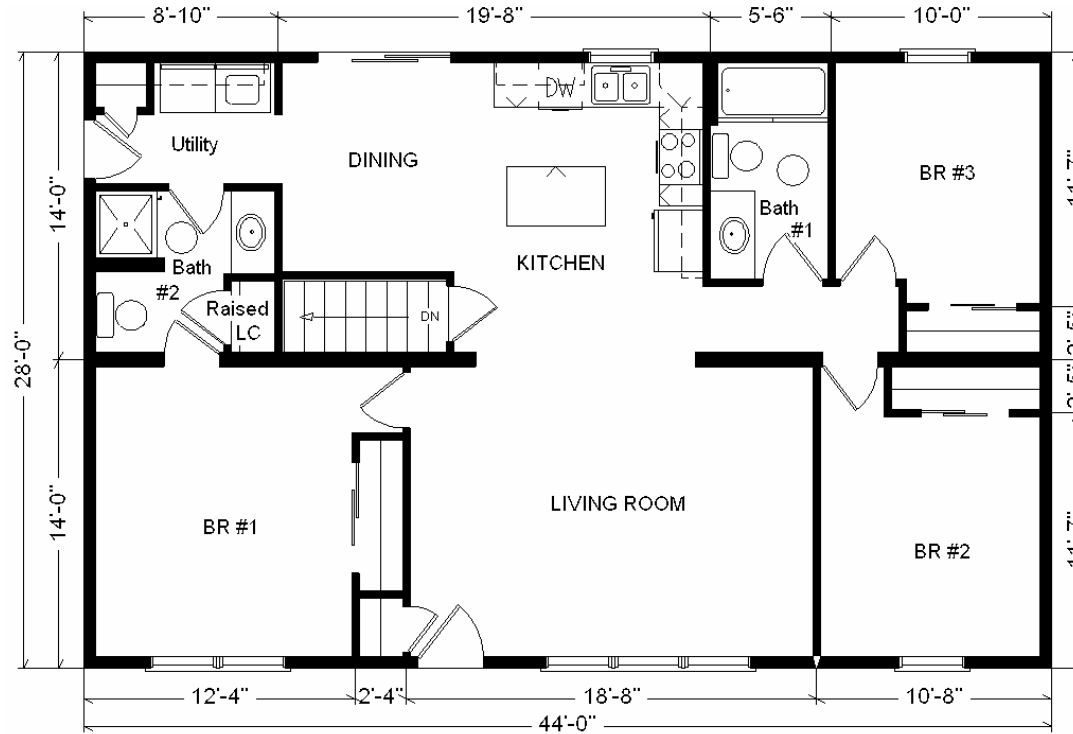
Total With Options Shown: \$81,877.00

* Item/Brand Name No Longer Available

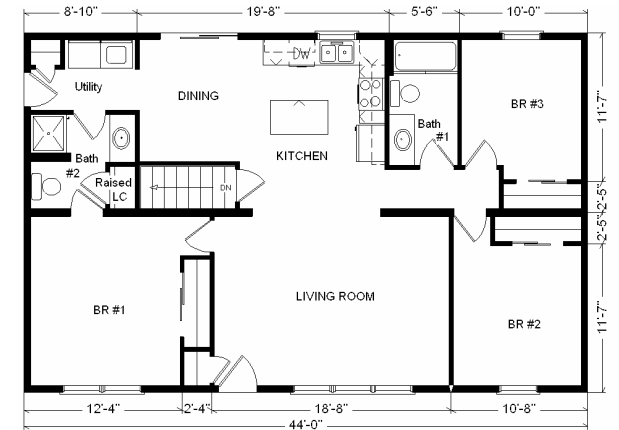
Buy Display Model For:

\$73,689.00!

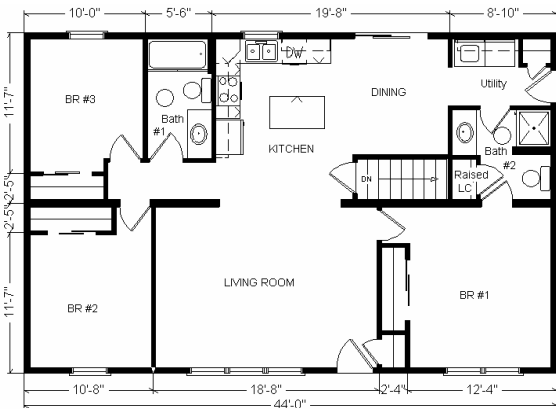
(discounted 8,188.00!)



Color Information
 White Siding, White Trim,
 Black Shingles,
 White Shutters, White Baths, Sable
 Carpet, 91082 Vinyls, Bisque Sink,
 Cherry Oak Trim & Doors, Bisque
 Dishwasher & Rangehood,
 Kolbe White Dbl-hung Windows,
 Almond Woodsong Countertop



Variation...



**Reverse Plan
 w/Optional
 Garage Shown**

**Price Includes All Blueprints,
 Delivery, Crane Work,
 Water Heater,
 Finish Ready For Hookups,
 Lennox Furnace Installed, & Tax!**

Feb. 2009

Base Price:	\$ 74,067.00
With the most Popular Options:	
Whirlpool Dishwasher.....	439.00
Utility Hook-ups.....	395.00
6' Patio Doors.....	481.00
¾ Bath.....	1,839.00
Central Air.....	2,140.00
Variation Total w/Options:..	\$79,361.00