

Model #5

28x62 Ranch w/SR 1,988 sq. ft.

Design Homes, Inc.

Missouri Valley, IA
 (#1218 -1-5)



Base Price: \$94,314.00

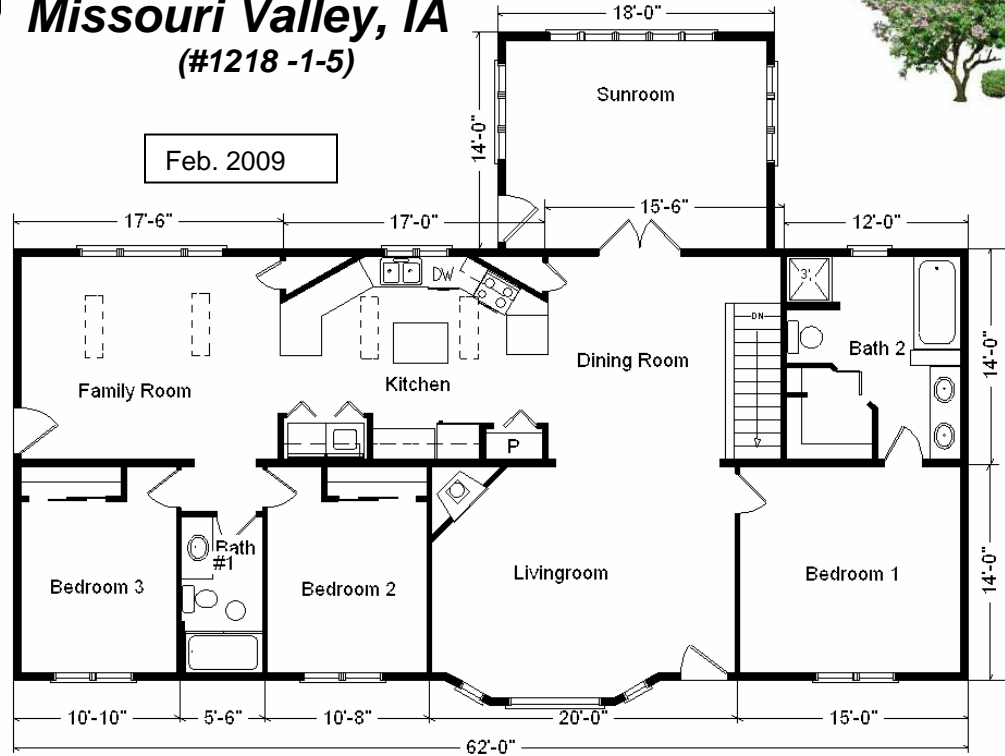
This Home Displays The Following Options:

* 6' Roof Rise (4.68/12 Slope)	2,046.00
Large Gable	1,074.00
Mastic Quest Siding	2,318.00
Upgrade Carpet (WL)	935.00
Laminate Floor (Family Room)	813.00
Wood Fireplace	2,498.00
Vaulted Ceilings (LR, DR, Kitchen Fm Rm)	1,630.00
Oak Trim & Doors	1,150.00
Interior French Doors w/Glass	534.00
Extra 3/4 bath	1,839.00
Utility Hook-Up w/Shelf	395.00
Cast Iron Sink	284.00
Double Sink Vanity	565.00
6' Whirlpool	1,950.00
Tri View Medicine Cabinets (x3)	360.00
Seneca Ridge Maple Cabinets	3,208.00
Moveable Island	1,037.00
* GE Dishwasher	421.00
* Crestline Windows	850.00
Walk-Out Bay (LR)	1,403.00
Skylight (x4)	2,049.00
Suntube	530.00
Casement Windows (Bdr 1,2,3)	1,356.00
Kitchen Window Upgrade	354.00
Home Total w/Options	\$123,913.00

14 x 18 Sunroom w/Gable Base Price	\$16,331.00
Mastic Quest Siding	360.00
Upgrade Carpet (WL)	296.00
Vaulted Ceiling	428.00
Casement Window Upcharge	3,222.00
Sunroom Total w/Options	\$20,637.00

Total With Options Shown: \$144,550.00

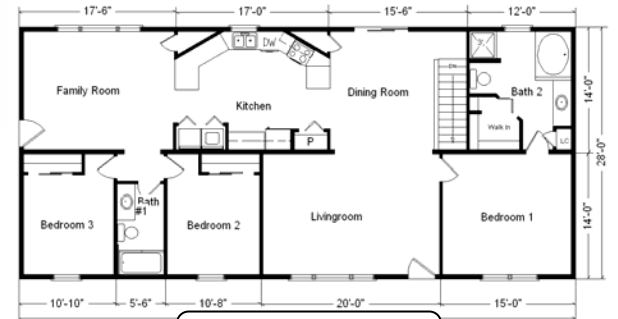
* Item/Brand Name No Longer Available



Feb. 2009

Color Information
 Timberstone Siding, Bronze Trim,
 Weathered Wood Shingles,
 Green Shutters, White & Bisque Baths,
 Toast Carpet, 91050 Vinyls, 2413 Laminate,
 Bisque Sink, Autumn Oak Trim & Doors,
 Bisque Dishwasher & Rangehood,
 Crestline Pewtertone Casement Windows,
 Melange Countertop, Black FP Front

**Price Includes All Blueprints, Delivery,
 Crane Work, Water Heater,
 Finish Ready For Hookups,
 Lennox Furnace Installed, & Tax!**



Variation...

**Buy Display Model For:
 \$124,313.00!
 (discounted 20,237.00!)**



**Reverse Plan
 w/Optional
 Garage Shown**

Base Price:	\$ 94,314.00
With the most Popular Options:	
Whirlpool Dishwasher.....	439.00
Utility Hook-ups.....	395.00
6' Patio Door.....	481.00
¾ Bath.....	1,839.00
Garden Tub.....	769.00
Variation Total w/Options:..	\$98,237.00