

Model 11

28x44 Ranch 1,232 sq. ft.

Design Homes, Inc.

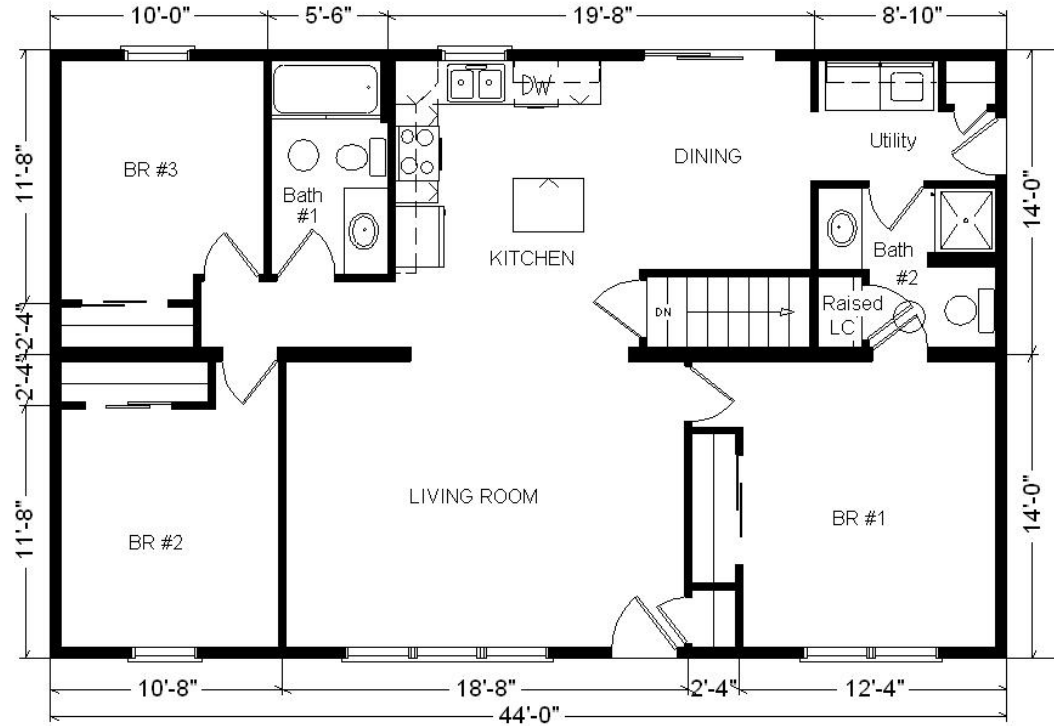
Prairie du Chien, WI

(#9362 -8-6)



Base Price:	\$74,067.00
This Home Displays The Following Options:	
4/12 Slope	1,100.00
Oak Trim & Doors	950.00
Extra 3/4 Bath	1,839.00
Utility w/Chadwood Cabinets	695.00
Chadwood Cabinets w/Trays	200.00
Whirlpool Dishwasher (DU850SWP)	439.00
Suntube (x2)	1,060.00
Painted Front Entry Door	122.00
6' Vision French Sliding Patio Door (DR)	615.00

Total With Options Shown: \$81,012.00

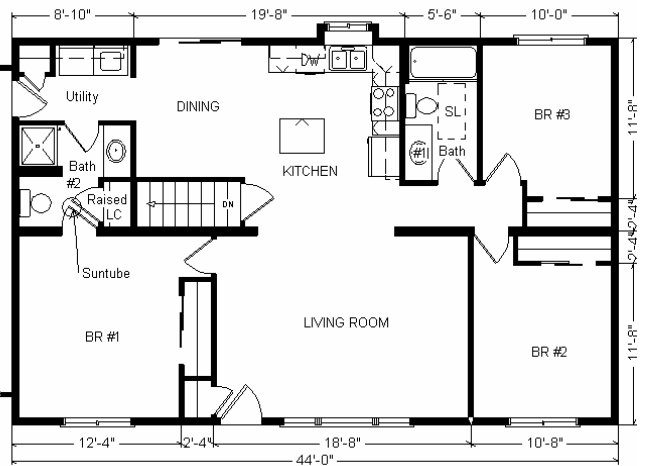


Color Information
 Desert Tan Siding, Clay Trim,
 Weathered Wood Shingles,
 Brown Shutters, White Baths, Brown Leaf
 Carpet, 91082 Vinyls, SS Sink,
 Nutmeg Oak Trim & Doors, White DW &
 Rangehood, Tan Sgl-hung Vinyl Windows,
 House Rock Countertop

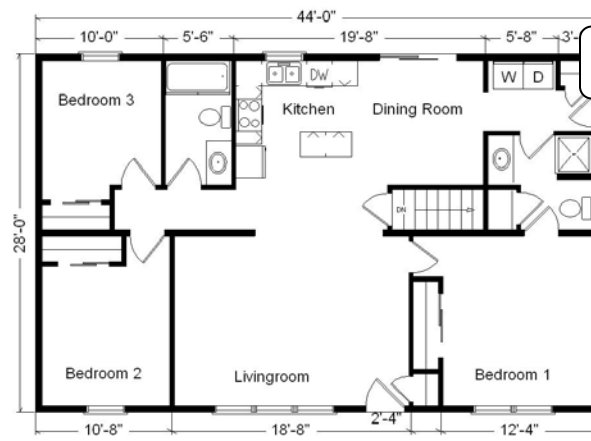
**Price Includes All
 Blueprints, Delivery, Crane
 Work,
 Water Heater,
 Finish Ready For Hookups,
 Lennox Furnace Installed,
 & Tax!**

Feb. 2009

**Reverse Plan
 w/Optional
 Garage Shown**



Variation...



Base Price:	\$ 74,067.00
With the most Popular Options:	
Whirlpool Dishwasher.....	439.00
Utility Hook-ups.....	395.00
6' Patio Doors.....	481.00
¾ Bath.....	1,839.00
Central Air.....	2,140.00
Variation Total w/Options:..	\$79,361.00