

# Model #13

28x42 Loft 1,743 sq. ft.

# Design Homes, Inc.

Prairie du Chien, WI  
(#8017 -5-1)

Feb. 2009

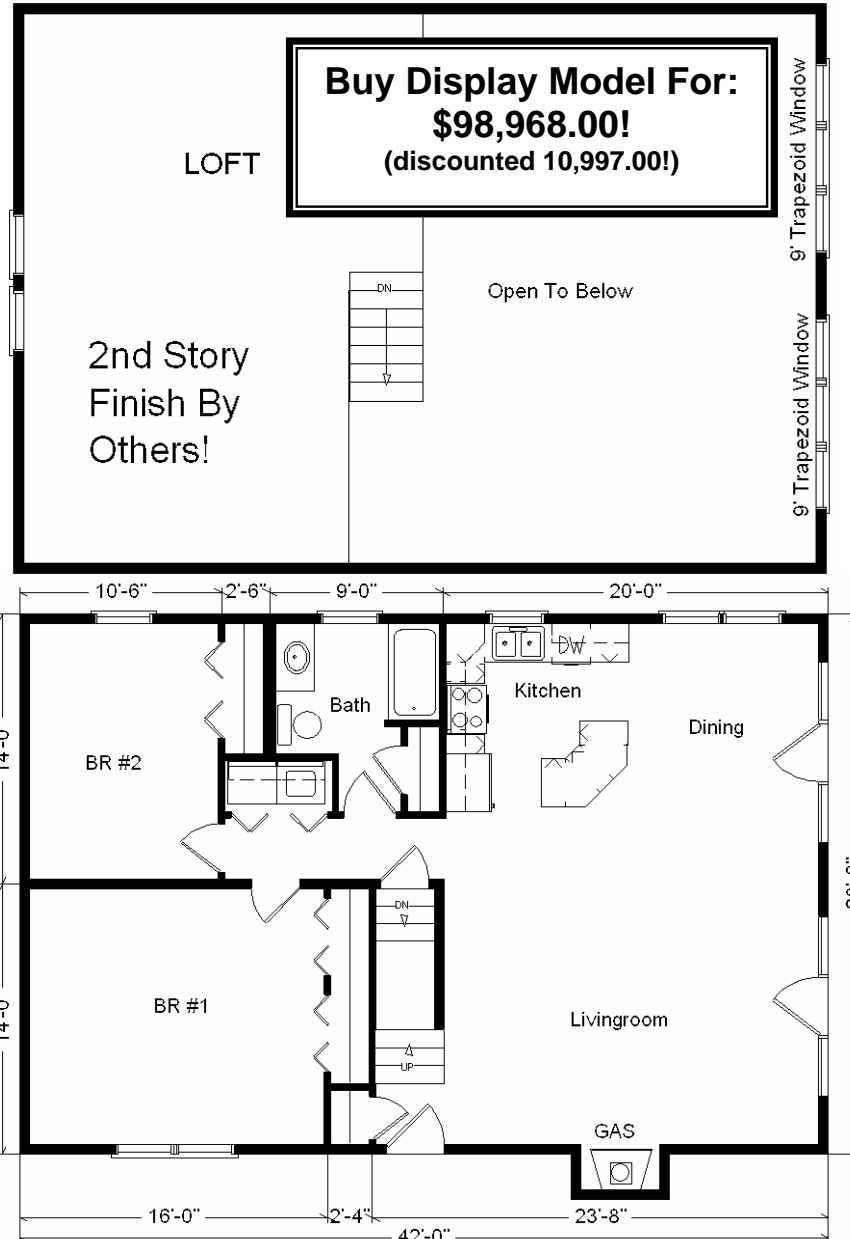
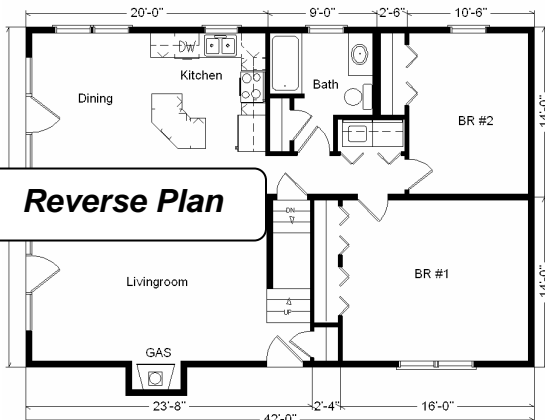


<b>Base Price:</b>	<b>\$86,951.00</b>
<b>This Home Displays The Following Options:</b>	
Outside Chimney Chase	669.00
* Crestline Windows (unfinished)	850.00
Vinyl Log Siding	5,444.00
Upgrade Carpet (Gorham)	601.00
Wood-look Laminate Floor (K,D, Hall)	850.00
Gas Fireplace	3,159.00
Oak Trim & Doors	950.00
TV/Phone Jack	13.00
Spring Valley Oak Med.Cabinets	1,280.00
Utility Room w\Cabinets	695.00
Vanity Drawer Base	88.00
* GE Dishwasher	421.00
2-9' Trapezoid Windows	5,780.00
* Crestline 9' Fr. Door (upcharge LR)	464.00
* Crestline 9' Fr. Door (outright Dining)	2,060.00
2nd Exterior Door Credit	-240.00
Shutter Credit	-70.00

**Total With Options Shown: \$109,965.00**

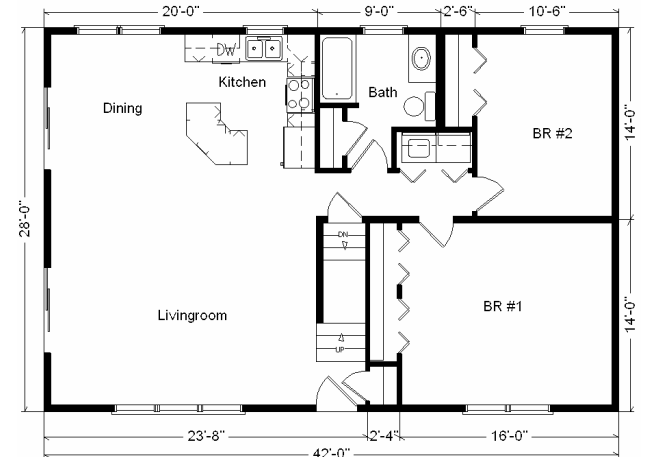
\* Item/Brand Name No Longer Available

**Price Includes All Blueprints, Delivery, Crane Work, Water Heater, Finish Ready For Hookups, Lennox Furnace Installed, & Tax!**



**Buy Display Model For:**  
**\$98,968.00!**  
(discounted 10,997.00!)

**Color Information**  
HB Vinyl Log Siding, Clay Trim, No Shutters, Weathered Wood Shingles, White Bath, Stonedust Carpet, 91082 Vinyls, SS Sink, 2513 Laminate Kit. & DR, White Dishwasher & Rangehood, Nutmeg Oak Trim & Doors, Crestline Taupe Dbl-hung Windows, Beige FP Front, Natural Limestone Countertop



**Variation...**

<b>Base Price:</b> .....	<b>\$ 86,951.00</b>
<b>With the most Popular Options:</b>	
Whirlpool Dishwasher.....	439.00
Utility Hook-ups.....	395.00
2-6' Patio Doors.....	1,610.00
2-6' Trapezoid Windows.....	3,478.00
Central Air.....	2,140.00
<b>Variation Total w/Options:..</b>	<b>\$96,013.00</b>