

# Model #16

28x76 4-sec Ranch 2,128 sq. ft.

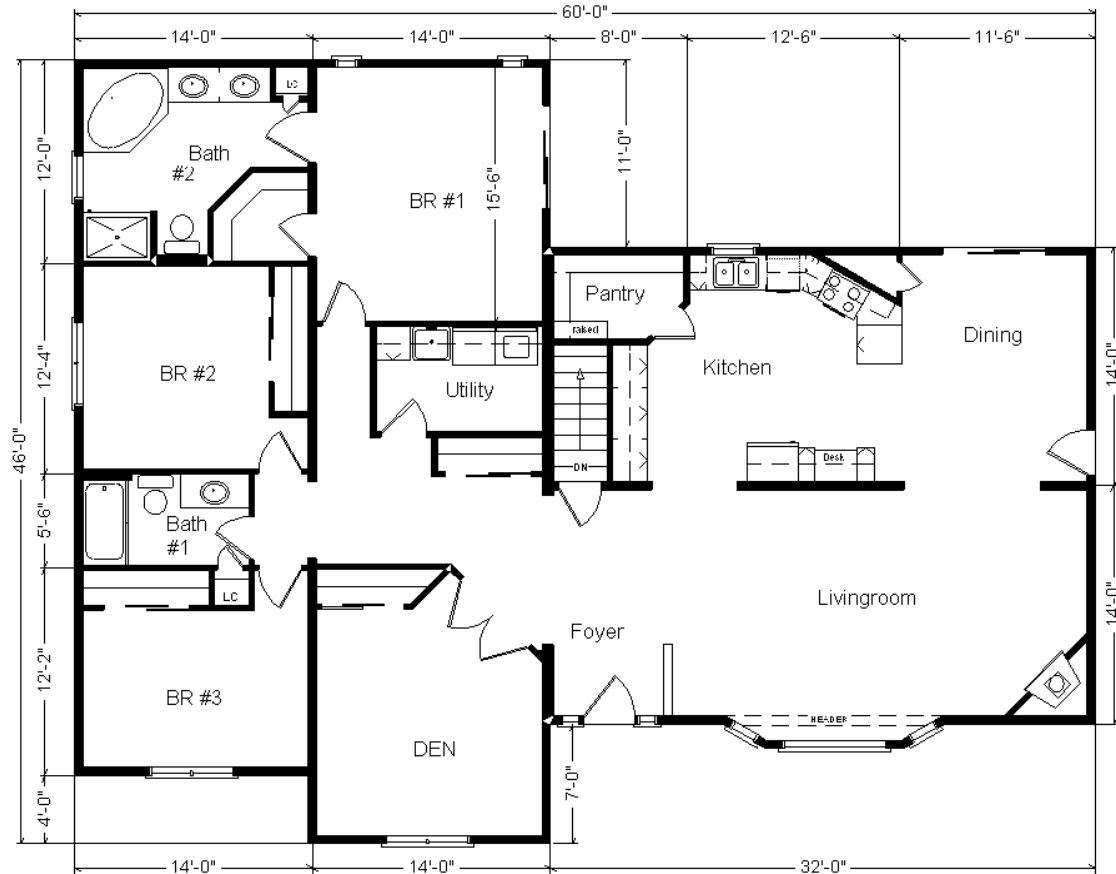
# Design Homes, Inc.

Prairie du Chien, WI

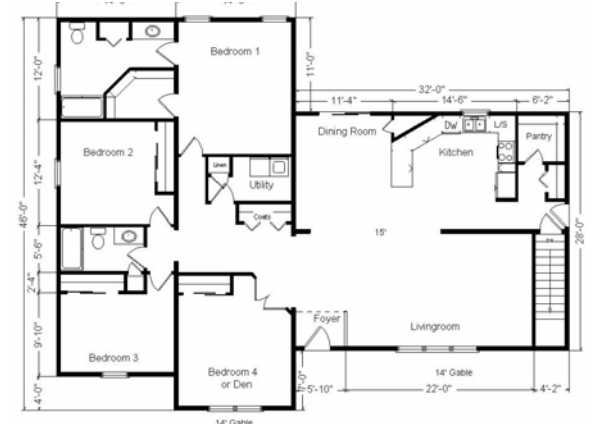
(#9381 -8-4)



<b>Base Price:</b>	<b>\$121,454.00</b>
<b>This Home Displays The Following Options:</b>	
6/12 Roof Slope	3,344.00
Large Gable	1,074.00
Peachtree Wood Windows	1,200.00
Dbl.6" Cedar Board Vinyl Siding	2,765.00
Upgrade Carpet (Divinity)	2,320.00
Hardwood Floor (Kitchen, DR)	3,105.00
Gas Fireplace	3,159.00
Vaulted Ceilings (LR, DR, Kitchen)	1,428.00
Cherry Oak Trim & Doors	1,323.00
6 Panel Oak Doors (x10)	1,950.00
Interior Lever Handles	300.00
Interior French Doors w/Glass	534.00
Extra 3/4 Bath	1,839.00
Utility Hook-Up w/Cherry Cabinets	1,230.00
Laundry Tub	138.00
4' of Extra Utility Room Cabinets	708.00
Brush Nickel Package	1,485.00
Double Sink Vanity	565.00
Corner Whirlpool Tub	2,400.00
Shower Door	160.00
Vanity Base Drawers (x2)	176.00
Cult. Granite Vanity Tops	550.00
Seneca Ridge Cherry Cabinets	3,744.00
Cabo Quartz Kitchen Counters	4,153.00
Round Over Edge	620.00
7' of Extra Wall Cabinets	1,239.00
Kitchen Desk	159.00
Desk Base Drawers ( x2)	511.00
Crown Molding Above Kit Cabinets	208.00
SS Microwave (MH2175)	369.00
SS Dishwasher (DU1100)	679.00
Walk-Out Bay (LR)	1,403.00
Casement Windows	1,356.00
Extra Windows (Bdr #1)	948.00
Window Grilles (GIA x 13)	572.00
6' Peachtree Fr Slider (BR #1 upcharge)	1,502.00
6' Peachtree Fr Slider (DR upcharge)	1,464.00
Sidelight Full Glass x2 (S694HRRB)	1,952.00
Upgrade Entry Door (S684HRRB)	444.00
<b>Total With Options Shown:</b>	<b>\$174,530.00</b>



**Color Information**  
 Dbl. 6" Granite Gray Clapboard Vinyl Siding, White Trim, Black Shingles, Black Shutters, White Baths, G41 Grey Granite Vanities, Harvest Carpet, Honeytone Wood Floors, 91066 Vinyls, SS55-3318 Sink, Cherry Oak Trim & Doors, SS DW and Microwave, Peachtree White Casement Windows, Cabo Countertop, Cherry/Paprika Cabinets, Black FP Front



**Variation**

**Price Includes All Blueprints, Delivery, Crane Work, Water Heater, Finish Ready For Hookups, Lennox Furnace Installed, & Tax!**

Feb. 2009

Variation Base Price.....	\$121,454.00
<b>With the most Popular Options:</b>	
6' Patio Doors.....	481.00
Utility Area w/Cabinets.....	695.00
Extra Full Bath.....	1,839.00
Interior French Doors w/glass.....	534.00
Central Air.....	2,140.00
<b>Variation Total w/Options:...</b>	<b>\$127,143.00</b>