

Model 4

28x42 Ranch 1,176 sq. ft.

Design Homes, Inc.

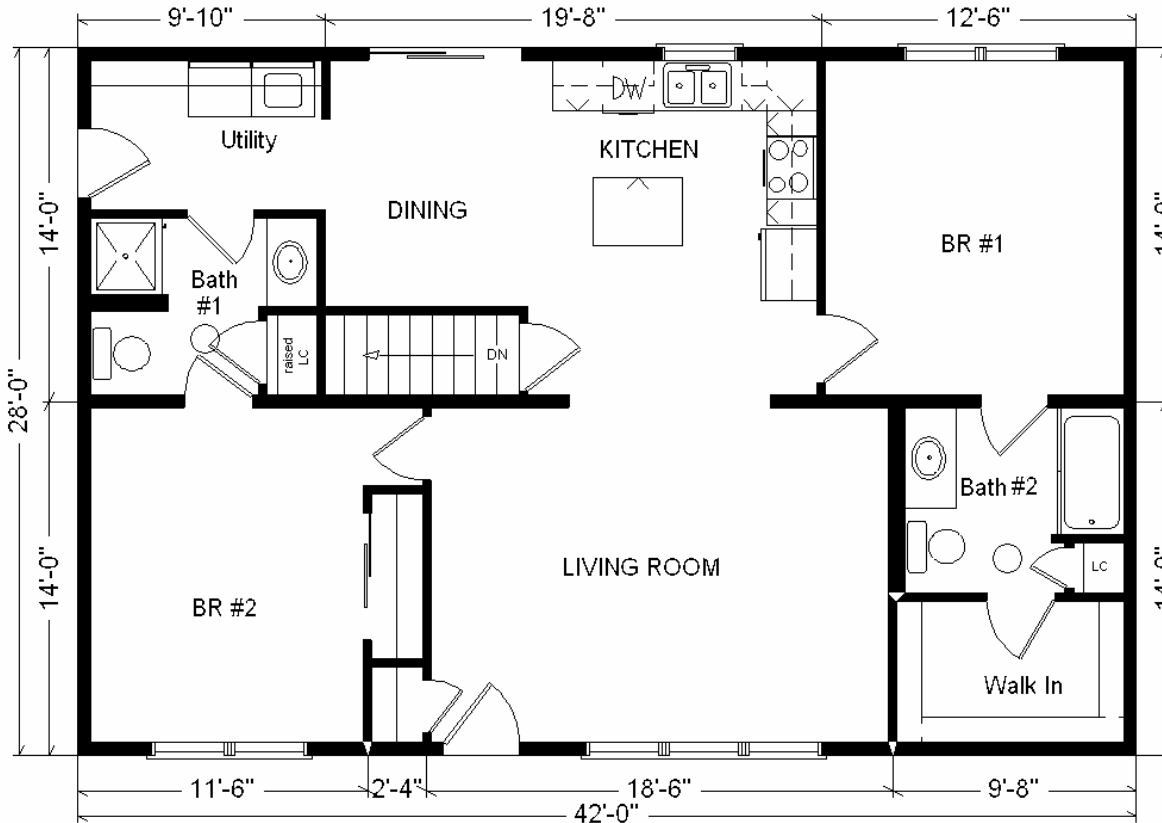
Prairie du Chien, WI

(#9410 -9-6)



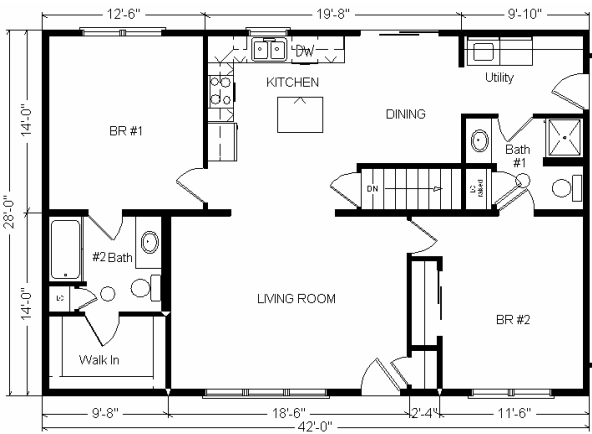
| | |
|--|--------------------|
| Base Price: | \$71,254.00 |
| This Home Displays The Following Options: | |
| 4/12 Roof Slope | 1,050.00 |
| Vaulted Ceilings (LR, Din, Kit) | 904.00 |
| Extra 3/4 Bath | 1,839.00 |
| Utility Hook-ups | 395.00 |
| Whirlpool Dishwasher (DU850SWP) | 439.00 |
| Suntube (x2) | 1,060.00 |
| TV/Phone Jack | 13.00 |
| Painted Exterior Front Door | 122.00 |
| 6' Vision French Sliding Patio Door (DR) | 615.00 |
| Total With Options Shown: | \$77,691.00 |

Feb. 2009

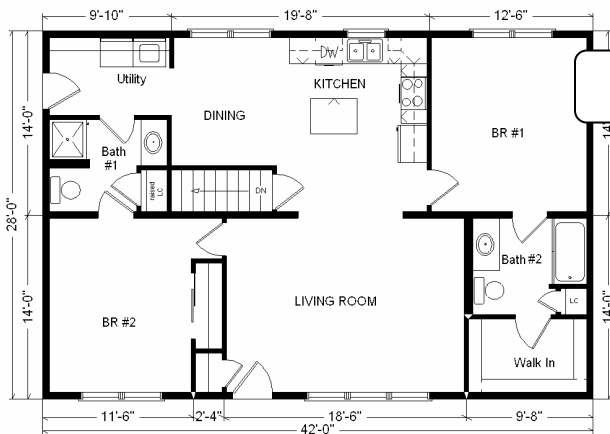


Color Information
S. Wicker Siding, Clay Trim, Driftwood Shingles, Blue Shutters, White Baths, Homespun Carpet, 91125 Vinyls, SS Sink, Nutmeg Oak Trim & Std. Doors, White DW & Rangehood, Tan Sgl-hung Vinyl Windows, Butterum Granite Countertop

Price Includes All Blueprints, Delivery, Crane Work, Water Heater, Finish Ready For Hookups, Lennox Furnace Installed, & Tax!



Reverse Plan w/Optional Garage Shown



Variation...

| | |
|---------------------------------------|---------------------|
| Base Price: | \$ 71,254.00 |
| With the most Popular Options: | |
| Whirlpool Dishwasher..... | 439.00 |
| Utility Hook-ups..... | 395.00 |
| ¾ Bath..... | 1,839.00 |
| Variation Total w/Options:.. | \$73,927.00 |