

Base Price:	\$94,314.00
This Home Displays The Following Options:	
* 7 1/2' Roof Rise (6/12Slope)	2,728.00
Hip Roof (Both Ends)	3,618.00
Large Gable	1,074.00
Extra Gable Detail	193.00
1' Bump-Out Of Small Window (x2)	928.00
Upgrade Carpet (Gorham)	761.00
Laminate Tile (Utility, Hall, Foyer)	849.00
Vaulted Ceilings (LR, DR, Kitchen)	1,261.00
Gas Fireplace	3,159.00
Oak Trim & Doors	1,150.00
Upgrade 6 Panel Oak Doors (x10)	1,950.00
Interior French Doors w/Glass	534.00
Paddle Fan Light (LR)	189.00
Box w/Pull Tag Wire	13.00
Extra 3/4 Bath	1,839.00
Utility Hook-Up w/Chadwood Cabinets	695.00
Oil Rubbed Bronze Package	1,210.00
Corner Whirlpool	2,400.00
Double Sink Vanity	565.00
Vanity Base Drawers (x3)	264.00
Shower Door (Bath #2)	160.00
Upgrade Vanity Top (Cultured Granite 6')	330.00
Seneca Ridge Oak Cabinets	2,137.00
8' Extra Base Cabinets	1,040.00
5.75' Extra Wall Cabinets	610.00
Upgrade Hi-Macs Kitchen Countertop	4,077.00
Crown Molding Above Kit Cabinets (28')	188.00
5' Mullion Glass Door Wall Cabinets	325.00
Whirlpool Dishwasher (DU850SWPS)	489.00
Suntube (x2)	1,060.00
Peachtree Windows	1,200.00
Extra Windows (Bdr. 2, 3)	1,064.00
Upgrade Kitchen Window (2030-2)	361.00
Upgrade Front Entry Door (SS684HRRB)	1,117.00
Sidelight Stained (SS692HRRB)	1,204.00
6' Citadel French Swing (Bdr. 1)	2,135.00
Home Total w/Options	\$137,191.00
14 x18 SR w/Gable Base Price	\$16,331.00
Vaulted Ceiling	428.00
Laminate Flooring	838.00
Paddle Fan/Light	151.00
6' Citadel French Swing	2,135.00
Credit 32" Door	-240.00
Sunroom Total	\$19,643.00
Total With Options Shown:	\$156,834.00

Design Homes, Inc.

Plover, WI
(#9379 -8-4)



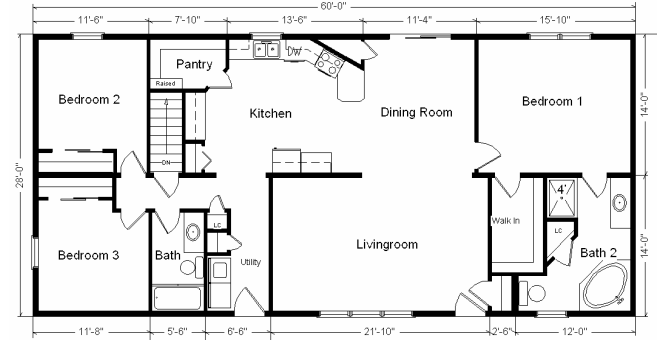
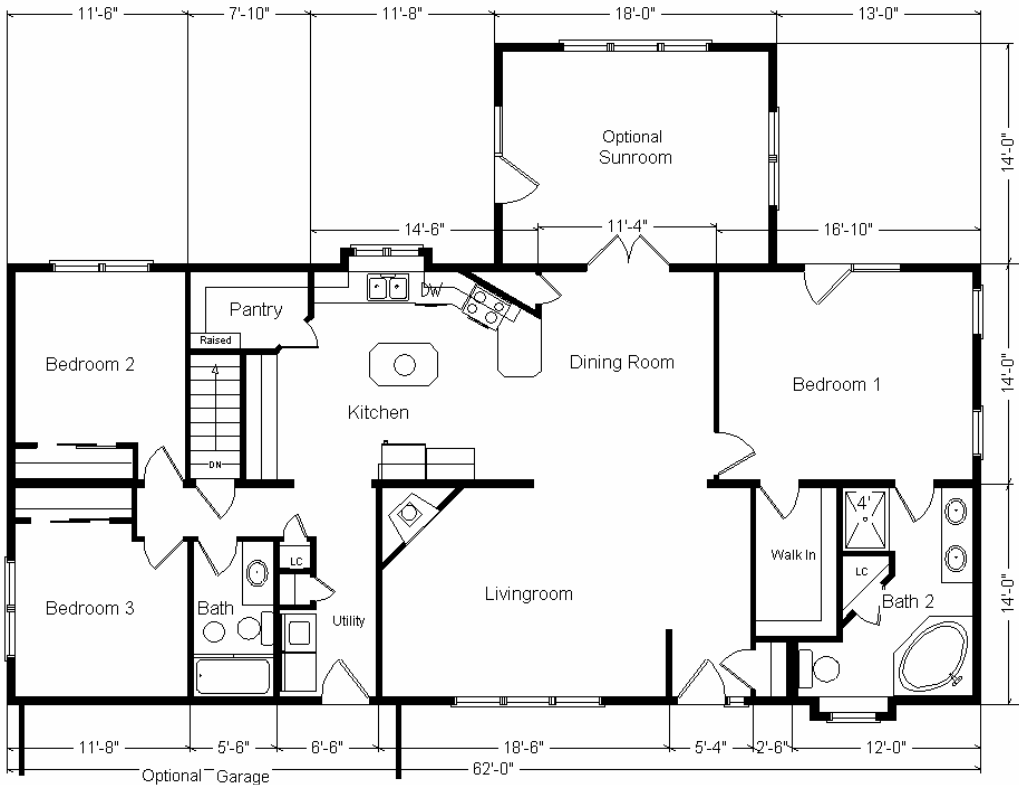
Model #4
28x62 Ranch w/SR 1,988 sq. ft.

Color Information
Nat. Clay Siding, White Trim, Black Shingles, Black Shutters, White Baths, Stonedust Carpet, 91066 Vinyls, Nordic Oak Laminate, SS64-3221 Sink, Nutmeg Oak Trim & Doors, SS Dishwasher & Rangehood, Peachtree White Dbl-hung Windows, Venetian Sand G42 Countertop w/Bevel Edge

Feb. 2009

Optional Garage
24' x 14'
 Base Price.....5,607.00
 6/12 Roof Slope616.00
 Gable Garage Roof ..1,620.00
Total.....\$7,843.00

Price Includes
All Blueprints,
Delivery, Crane
Work,
Water Heater,
Finish Ready
For Hookups,
Lennox
Furnace
Installed, &
Tax!



28x60 Variation...

28x60 Base Price:	\$ 92,064.00
With the most Popular Options:	
Whirlpool Dishwasher.....	439.00
Utility Hook-ups.....	395.00
6' Patio Doors.....	481.00
¾ Bath.....	1,839.00
Corner Soaker Tub.....	1,300.00
Variation Total w/Options:..	\$96,518.00