

Model #6

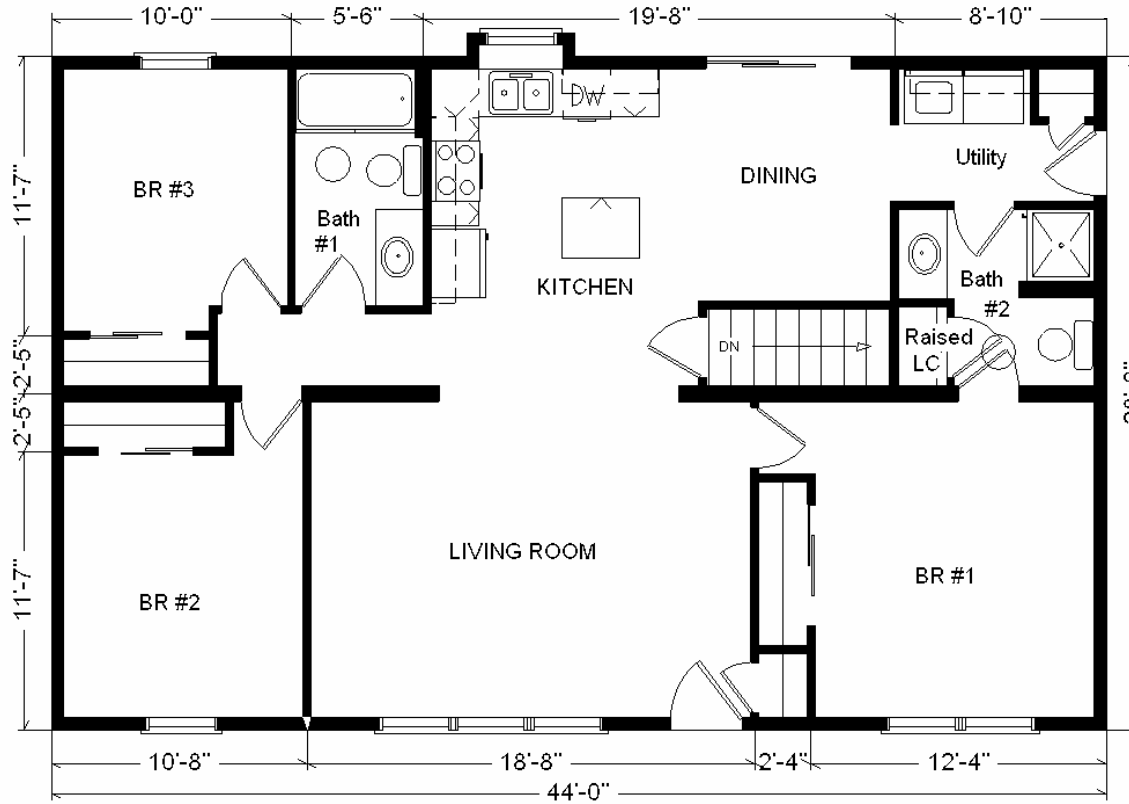
28x44 Ranch 1,232 sq. ft.

Design Homes, Inc.

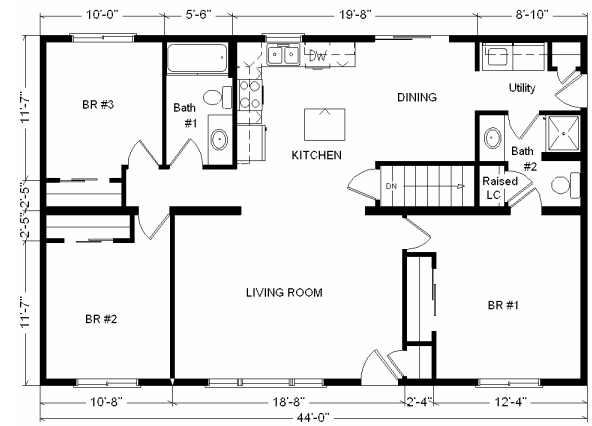
Plover, WI
(#9208 -8-6)



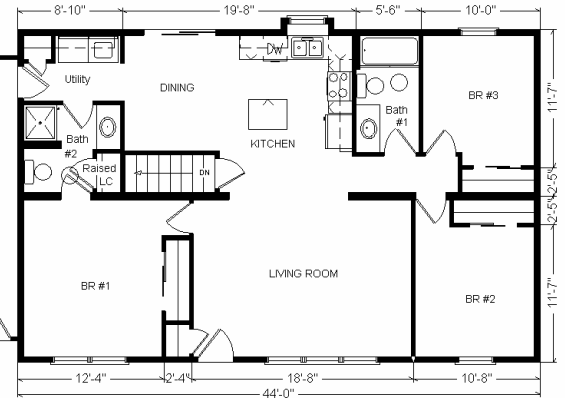
Base Price:	\$74,067.00
This Home Displays The Following Options:	
5/12 Roof Slope	1,452.00
6/12 Gable w/Extra Detail	1,618.00
1' Bump-Out Small Wnd (Kit.)	464.00
Carpet Upgrade (Gorham)	632.00
Vaulted Ceilings (Kitchen,DR,LR)	880.00
Box w/Pull Tag Wire	13.00
Extra 3/4 Bath	1,839.00
Utility w/Northport White Cabinets	685.00
Cult. Granite Vanity (3.5')	193.00
Whirlpool Dishwasher (DU850SWP)	439.00
Suntube (x2)	1,060.00
Grilles For Windows (GIA x8)	336.00
Grilles For Patio Door	114.00
6' Vision French Slider (DR)	615.00
Total With Options Shown:	\$84,407.00



Color Information
S. Wicker Siding, Almond Trim, Weathered Wood Shingles, Burgundy Shutters, White Baths, Camel Carpet, 91082 Vinyls, SS Sink, Standard Trim & Doors, White Dishwasher & Rangehood, Tan Sng-hung Windows, House Rock Countertop



Reverse Plan w/Optional Garage Shown



Feb. 2009

Price Includes All Blueprints, Delivery, Crane Work, Water Heater, Finish Ready For Hookups, Lennox Furnace Installed, & Tax!

Variation...

Base Price:	\$ 74,067.00
With the most Popular Options:	
Whirlpool Dishwasher.....	439.00
Utility Hook-ups.....	395.00
6' Patio Doors.....	481.00
¾ Bath.....	1,839.00
Central Air.....	2,140.00
Variation Total w/Options:..	\$79,361.00