

Model #2

28x42 Cape Cod 1,859 sq. ft.

Design Homes, Inc.

Buy Display Model For:
\$95,862.00!
 (discounted 13,072.00!)

Salix, IA
 (#1286 -3-5)



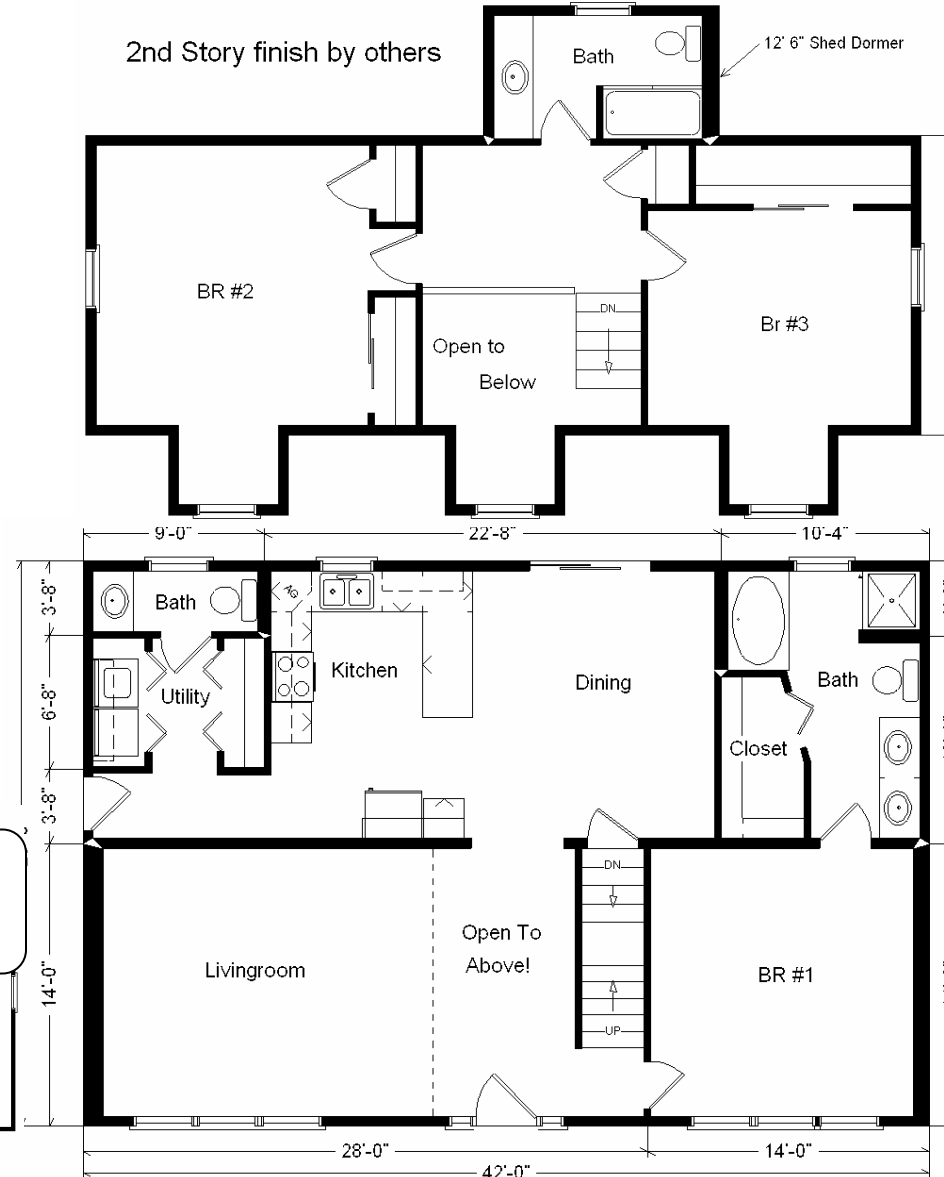
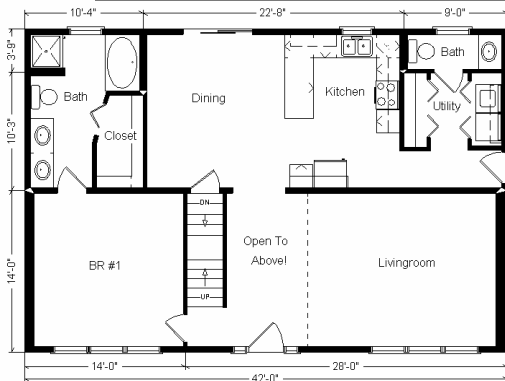
Feb. 2009

Base Price:	\$86,951.00
This Home Displays The Following Options:	
12' Shed Dormer	3,973.00
Extra 6' Gable Dormer	3,711.00
Upgrade Siding (Mastic-Quest)	2,628.00
* Upgrade Carpet (Zinc Berber)	422.00
Tile-look Laminate in Foyer	195.00
Oak Trim and Doors	950.00
4-Recessed Lights (Kitchen)	180.00
Dimmer Switch (Kitchen)	17.00
Extra 1/2 Bath	1,035.00
Utility Area w/Northport Cabinets	695.00
Cast Iron Sink	284.00
Double Sink Vanity	565.00
5' Whirlpool Tub	1,900.00
Oak Tri-view Medicine Cabinets (x3)	360.00
Spring Valley Medium Cabinets	1,280.00
* GE Dishwasher	421.00
* Crestline Windows (unfinished)	850.00
Upgrade Window (Bdr.#1)	532.00
Window Grilles (GIA x15)	585.00
2-Sidelights (Foyer)	834.00
* Prado 6' Patio Door (DR)	566.00

Total With Options Shown: \$108,934.00

* Item/Brand Name No Longer Available

**Reverse Plan
w/Optional
Garage Shown**



Color Information

Glacier Blue Siding, White Trim, Black Shingles, Black Shutters, White & Bisque Baths, Zinc White Carpet, 91070 Vinyls, Bisque Sink, Nutmeg Oak Trim & Doors, Black DW, Bisque Rangehood, White Crestline Dbl-hung Windows, Beige Pampas Countertop

**Price Includes All Blueprints,
 Delivery, Crane Work,
 Water Heater,
 Finish Ready For Hookups,
 Lennox Furnace Installed, & Tax!**



Variation...

Base Price:	\$ 86,951.00
With the most Popular Options:	
Whirlpool Dishwasher.....	439.00
Utility Hook-ups.....	395.00
6' Patio Door.....	481.00
1/2 Bath.....	1,035.00
Variation Total w/Options:..	\$89,301.00