

# Model #6

28x42 Prow 1,120 sq. ft.

# Design Homes, Inc.

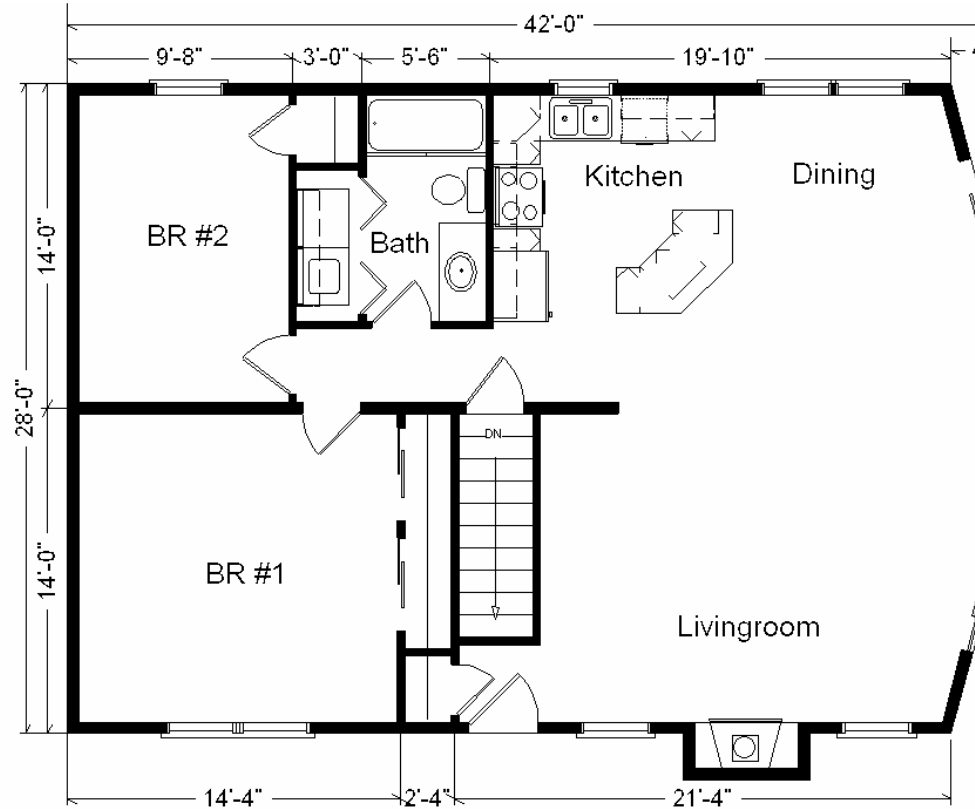
Waseca, MN

(#9209 -8-6)

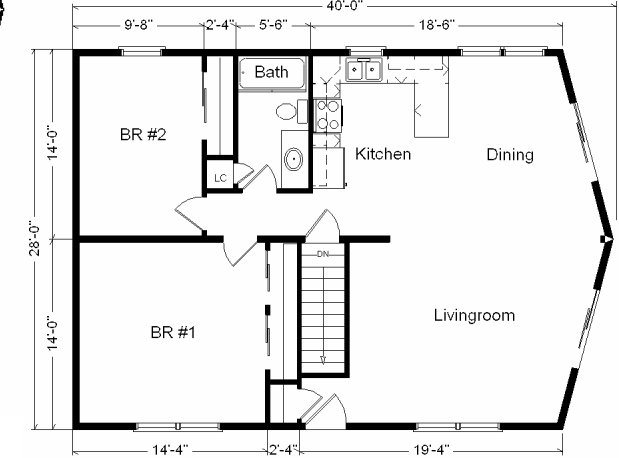


<b>Base Price:</b>	<b>\$71,254.00</b>
<b>This Home Displays The Following Options:</b>	
2 x 12 Rafters & Vaulted Ceilings	1,673.00
16" O.C. Roof Trusses	378.00
Upgrade Carpet (WL)	784.00
Gas Fireplace	3,159.00
Fireplace Chase	669.00
Oak Trim and Doors	950.00
Utility Room w/Cabinets	695.00
Cult. Granite Vanity Top	220.00
Tv/Phone Box	13.00
Spring Valley Med. Cabinets	1,280.00
Whirlpool Dishwasher	439.00
Suntube	530.00
Vanity Base Drawer	88.00
2-9' Trapezoid Windows	2,688.00
9' Sliding Patio Doors (DR-outright)	2,083.00
9' Sliding Patio Doors (LR-upcharge)	57.00
Extra LR Windows	570.00
Exterior Door Credit	-240.00

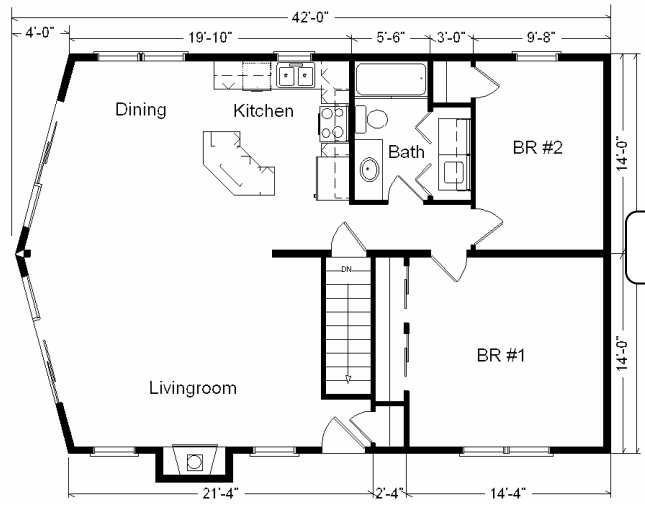
**Total With Options Shown: \$87,290.00**



**Color Information**  
 Desert Tan Siding, Green Trim, Green Shingles, Green Shutters, Bisque Bath, Oatmeal Vanity, Brown Leaf Carpet, 91051 Vinyls, SS Sink, SV Oak Natural Cabs., Natural Oak Trim & Doors, Black DW, Bisque Rangehood, Tan Sgl-hung Vinyl Windows, Nat. Limestone Countertop



**28 x 40 Variation...**



**Reverse Plan**

Feb. 2009

**Price Includes All Blueprints, Delivery, Crane Work, Water Heater, Finish Ready For Hookups, Lennox Furnace Installed, & Tax!**

<b>28 x 40 Base Price:</b>	<b>\$ 68,442.00</b>
<b>With the most Popular Options:</b>	
Whirlpool Dishwasher	439.00
2-6' Patio Doors	1,610.00
Vaulted Great Room	988.00
Central Air	2,140.00
<b>Variation Total w/Options:</b>	<b>\$73,619.00</b>